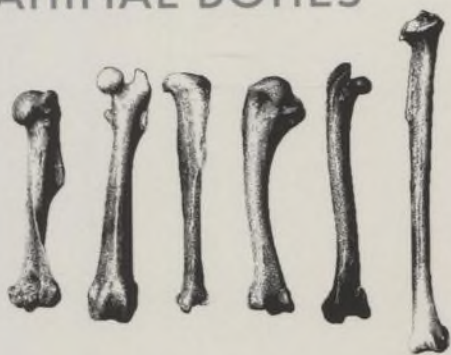


*Praise for*  
**IDENTIFYING AND INTERPRETING  
ANIMAL BONES**



"... contains detailed and concise direction to the preparation, identification, description, and reporting of bone assemblages from archeological sites. ... [with] easily accessible topical references and beneficial 'tools of the trade.' ... a meticulously organized approach to this complex topic..."—BRUCE F. C. THOMPSON, research archaeologist

"... brings together cutting edge knowledge of the analysis of archaeological faunal remains. Discussions of broken, worked, weathered, gnawed, and digested bone add new depth to analysis. The emphasis on using faunal remains from particular contexts as separate assemblages for understanding human activity areas at sites is particularly significant as archaeological specialists push to learn more from their collections."

—JACK ROSSEN, Department of Anthropology, Ithaca College

"Beisaw makes a valuable contribution by writing a "how to" manual explicitly designed for the beginner. She takes the novice step by step through the essentials of zooarchaeology—from receipt of a faunal assemblage, to cleaning, sorting, and identifying the bones, to recording essential taxonomic and quantitative information, to writing up a preliminary report. With its many illustrations, lucid explanations, and comprehensive glossary, this book is an excellent place for the beginner to get a solid foundation in the basics of zooarchaeology."—John D. Speth, Arthur F. Thurnau Professor Emeritus of Anthropology, University of Michigan

**TEXAS A&M UNIVERSITY PRESS**

College Station [www.tamupress.com](http://www.tamupress.com)

ISBN-13: 978-1-62349-026-3

ISBN-10: 1-62349-026-X

90000



9 781623 490263

# Contents

Acknowledgments *vii*

## **1. INTRODUCTION** *1*

## **2. PREPARING YOUR ASSEMBLAGE** *7*

Cleaning Bones *8*

Sorting Bones *10*

Mending Fresh Breaks *12*

## **3. WHAT ANIMAL IS IT?** *17*

Class: Mammal, Fish, Bird, Amphibian, or Reptile? *18*

Order and Family: A Question of Functional Morphology *24*

Mammal Orders *28*

Fish Orders *33*

Bird Orders *35*

Amphibian Orders *37*

Reptile Orders *37*

Genus and Species: Environment and Economy *40*

## **4. WHAT BONE IS IT?** *47*

Skulls and Teeth *54*

Vertebrae and Ribs *59*

Vertebrae *59*

Ribs *68*

Pelvic and Shoulder Girdles *70*

Pelvic Girdle *71*

Shoulder Girdle *75*

Upper Limbs *79*

Lower Limbs *88*

Hands and Feet (Manus and Pes) *94*

Siding Bone *98*

Determining Sex and Age *99*

## **5. WHAT ELSE CAN THE BONE TELL ME? 103**

- Broken Bone 104
- Cut Bone 105
- Worked Bone 108
- Burned Bone 109
- Weathered Bone 111
- Gnawed Bone 112
- Digestive Damage 113
- The Biased Assemblage 113

## **6. RECORDING YOUR DATA 117**

- Levels of Certainty 117
- Size Classes 120
- Mutually Exclusive Categories 120
- Completeness and Articulations 123
- Counting and Weighing Bone 123
- Your Research Questions 125
- Comment Fields 126

## **7. DESCRIBING YOUR DATA 129**

- Common Calculations 129
- Body-Part Profiles 133
- Contextual Analysis 136
- Producing a Faunal Report 136

Epilogue 141

Appendix 1: Online Appendix 143

Appendix 2: Bone Atlases 144

Appendix 3: Mammals, Fish, Birds, Reptiles, and Amphibians  
by Habitat Preference 146

Glossary 153

References 165

Index 169