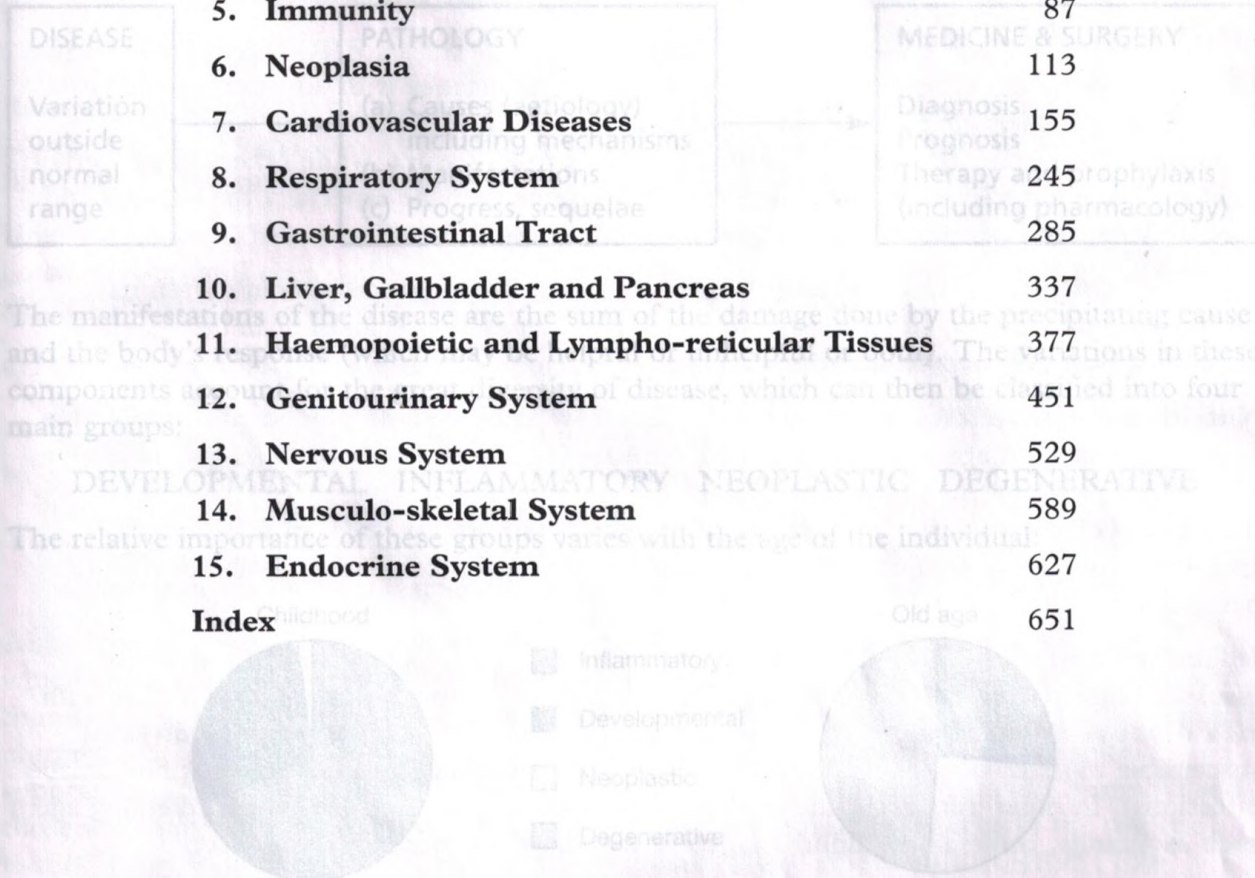


INTRCONTENTS

Pathology is	Introduction	ix
	1. Cell and Tissue Damage	1
	2. Inflammation	31
Disease occurs	3. Healing	47
	4. Infection	61
	5. Immunity	87
	6. Neoplasia	113
	7. Cardiovascular Diseases	155
	8. Respiratory System	245
	9. Gastrointestinal Tract	285
	10. Liver, Gallbladder and Pancreas	337
	11. Haemopoietic and Lympho-reticular Tissues	377
	12. Genitourinary System	451
	13. Nervous System	529
	14. Musculo-skeletal System	589
	15. Endocrine System	627
	Index	651



Different diseases affect different age groups. Developmental disorders and degenerative diseases affect the opposite extremes of life while tumours, in general, affect an ageing population.

Physiological ageing itself implies a gradual loss of cellular and body vitality usually associated with atrophy of tissues and organs. This process is aggravated and mimicked by the degenerative diseases of old age so that the physiological and pathological states tend to merge. Nonetheless, the student should attempt to identify the distinctions between ageing and disease. Additionally, in old age multiple diseases often coexist and interact with one another, and drug induced disorders are also common in this age group.