

# BRIEF CONTENTS

<b>1</b>	Introduction: Themes in the Study of Life	2
----------	---	---

## UNIT ONE

### THE CHEMISTRY OF LIFE 22

<b>2</b>	The Chemical Context of Life	25
<b>3</b>	Water and the Fitness of the Environment	41
<b>4</b>	Carbon and the Molecular Diversity of Life	53
<b>5</b>	The Structure and Function of Macromolecules	63
<b>6</b>	An Introduction to Metabolism	89

## UNIT TWO

### THE CELL 108

<b>7</b>	A Tour of the Cell	110
<b>8</b>	Membrane Structure and Function	140
<b>9</b>	Cellular Respiration: Harvesting Chemical Energy	159
<b>10</b>	Photosynthesis	182
<b>11</b>	The Reproduction of Cells	204

## UNIT THREE

### THE GENE 222

<b>12</b>	Meiosis and Sexual Life Cycles	225
<b>13</b>	Mendel and the Gene Idea	238
<b>14</b>	The Chromosomal Basis of Inheritance	262
<b>15</b>	The Molecular Basis of Inheritance	281
<b>16</b>	From Gene to Protein	297
<b>17</b>	Microbial Models: The Genetics of Viruses and Bacteria	324
<b>18</b>	Genome Organization and Expression in Eukaryotes	351
<b>19</b>	DNA Technology	369

## UNIT FOUR

### MECHANISMS OF EVOLUTION 396

<b>20</b>	Descent with Modification: A Darwinian View of Life	399
<b>21</b>	The Evolution of Populations	416
<b>22</b>	The Origin of Species	436
<b>23</b>	Tracing Phylogeny: Macroevolution, the Fossil Record, and Systematics	454

## UNIT FIVE

### THE EVOLUTIONARY HISTORY OF BIOLOGICAL DIVERSITY 482

<b>24</b>	Early Earth and the Origin of Life	486
<b>25</b>	Prokaryotes and the Origins of Metabolic Diversity	498
<b>26</b>	The Origins of Eukaryotic Diversity	518
<b>27</b>	Plants and the Colonization of Land	547
<b>28</b>	Fungi	573
<b>29</b>	Invertebrates and the Origin of Animal Diversity	589
<b>30</b>	The Vertebrate Genealogy	628

## UNIT SIX

### PLANTS: FORM AND FUNCTION 666

<b>31</b>	Plant Structure and Growth	668
<b>32</b>	Transport in Plants	692
<b>33</b>	Plant Nutrition	711
<b>34</b>	Plant Reproduction and Development	727
<b>35</b>	Control Systems in Plants	750

## UNIT SEVEN

### ANIMALS: FORM AND FUNCTION 776

<b>36</b>	An Introduction to Animal Structure and Function	779
<b>37</b>	Animal Nutrition	796
<b>38</b>	Circulation and Gas Exchange	819
<b>39</b>	The Body's Defenses	852
<b>40</b>	Controlling the Internal Environment	879
<b>41</b>	Chemical Signals in Animals	912
<b>42</b>	Animal Reproduction	937
<b>43</b>	Animal Development	963
<b>44</b>	Nervous Systems	993
<b>45</b>	Sensory and Motor Mechanisms	1026

## UNIT EIGHT

### ECOLOGY 1058

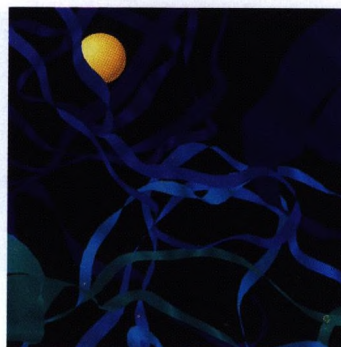
<b>46</b>	An Introduction to Ecology: Distribution and Adaptations of Organisms	1061
<b>47</b>	Population Ecology	1093
<b>48</b>	Community Ecology	1118
<b>49</b>	Ecosystems	1145
<b>50</b>	Behavior	1172

# DETAILED CONTENTS

## CHAPTER 1

### Introduction: Themes in the Study of Life 2

Life is organized on many structural levels	3
Each level of biological organization has emergent properties	4
Cells are an organism's basic units of structure and function	8
The continuity of life is based on heritable information in the form of DNA	8
A feeling for organisms enriches the study of life	8
Structure and function are correlated at all levels of biological organization	9
Organisms are open systems that interact continuously with their environments	10
Diversity and unity are the dual faces of life on Earth	11
Evolution is the core theme of biology	13
Science as a process of inquiry often involves hypothetico-deductive thinking	15
Science and technology are functions of society	20
Biology is a multidisciplinary adventure	21



## UNIT ONE

### THE CHEMISTRY OF LIFE 22

#### CHAPTER 2

### The Chemical Context of Life 25

Matter consists of chemical elements in pure form and in combinations called compounds	25
Life requires about 25 chemical elements	27
Atomic structure determines the behavior of an element	27
Atoms combine by chemical bonding to form molecules	32
Weak chemical bonds play important roles in the chemistry of life	35
A molecule's biological function is related to its shape	36
Chemical reactions change the composition of matter	36
Chemical conditions on the early Earth set the stage for the origin and evolution of life	38

#### CHAPTER 3

### Water and the Fitness of the Environment 41

The polarity of water molecules results in hydrogen bonding	41
Organisms depend on the cohesion of water molecules	42
Water contributes to Earth's habitability by moderating temperatures	43
Oceans and lakes don't freeze solid because ice floats	45
Water is the solvent of life	46
Organisms are sensitive to changes in pH	48
Acid precipitation threatens the fitness of the environment	50

## CHAPTER 4

### Carbon and the Molecular Diversity of Life 53

Organic chemistry is the study of carbon compounds	53
Carbon atoms are the most versatile building blocks of molecules	54
Variation in carbon skeletons contributes to the diversity of organic molecules	56
Functional groups also contribute to the molecular diversity of life	58
The chemical elements of life: <i>a review</i>	61

## CHAPTER 5

### The Structure and Function of Macromolecules 63

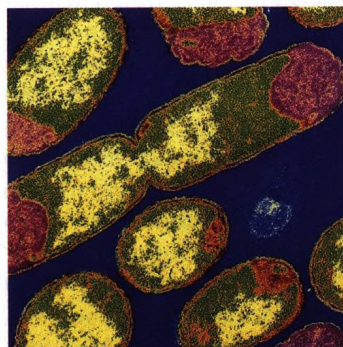
Most macromolecules are polymers	63
A limitless variety of polymers can be built from a small set of monomers	65
Organisms use carbohydrates for fuel and building material	65
Lipids are mostly hydrophobic molecules with diverse functions	70
Proteins are the molecular tools for most cellular functions	73
A polypeptide is a polymer of amino acids connected in a specific sequence	74
A protein's function depends on its specific conformation	74
Nucleic acids store and transmit hereditary information	83
A DNA strand is a polymer with an information-rich sequence of nucleotides	84
Inheritance is based on precise replication of DNA	85
We can use DNA and proteins as tape measures of evolution	85

## CHAPTER 6

### An Introduction to Metabolism 89

The chemistry of life is organized into metabolic pathways	89
Organisms transform energy	90
The energy transformations of life are subject to two laws of thermodynamics	91
Organisms live at the expense of free energy	92
ATP powers cellular work by coupling exergonic to endergonic reactions	95
Enzymes speed up metabolic reactions by lowering energy barriers: <i>an overview</i>	97
Enzymes are substrate-specific: <i>a closer look</i>	98
The active site is an enzyme's catalytic center: <i>a closer look</i>	99
A cell's chemical and physical environment affects enzyme activity: <i>a closer look</i>	100

Metabolic order emerges from the cell's regulatory systems and structural organization	102
The theme of emergent properties is manifest in the chemistry of life: <i>a review</i>	103



## UNIT TWO

### THE CELL 108

## CHAPTER 7

### A Tour of the Cell 110

Microscopes provide windows to the world of the cell	111
Cell biologists can isolate organelles to study their functions	113
A panoramic view of the cell	114
The nucleus is a cell's genetic library	118
Ribosomes build a cell's proteins	118
Many organelles are related through the endomembrane system	118
The endoplasmic reticulum manufactures membranes and performs many other biosynthetic functions	120
The Golgi apparatus finishes, sorts, and ships many products of the cell	122
Lysosomes are digestive compartments	123
Vacuoles have diverse functions in cell maintenance	124
Peroxisomes consume oxygen in various metabolic functions	125
Mitochondria and chloroplasts are the energy transformers of cells	126
The cytoskeleton provides structural support and functions in cell motility	128
Plant cells are encased by cell walls	134
The extracellular matrix (ECM) of animal cells functions in support, adhesion, movement, and development	134
Intercellular junctions integrate cells into higher levels of structure and function	135
The cell is a living unit greater than the sum of its parts	136

## CHAPTER 8

**Membrane Structure and Function** 140

Membrane models have evolved to fit new data: <i>science as a process</i>	140
A membrane is a fluid mosaic of lipids, proteins, and carbohydrates	142
A membrane's molecular organization results in selective permeability	147
Passive transport is diffusion across a membrane	147
Osmosis is the passive transport of water	148
Cell survival depends on balancing water uptake and loss	149
Specific proteins facilitate the passive transport of selected solutes	150
Active transport is the pumping of solutes against their gradients	151
Some ion pumps generate voltage across membranes	151
In cotransport, a membrane protein couples the transport of one solute to another	153
Exocytosis and endocytosis transport large molecules	154
Specialized membrane proteins transmit extracellular signals to the inside of the cell	155

## CHAPTER 9

**Cellular Respiration: Harvesting Chemical Energy** 159

Cellular respiration and fermentation are catabolic (energy-yielding) pathways	159
Cells must recycle the ATP they use for work	160
Redox reactions release energy when electrons move closer to electronegative atoms	160
Electrons "fall" from organic molecules to oxygen during cellular respiration	161
The "fall" of electrons during respiration is stepwise, via NAD <sup>+</sup> and an electron transport chain	162
Respiration is a cumulative function of glycolysis, the Krebs cycle, and electron transport: <i>an overview</i>	164
Glycolysis harvests chemical energy by oxidizing glucose to pyruvate: <i>a closer look</i>	165
The Krebs cycle completes the energy-yielding oxidation of organic molecules: <i>a closer look</i>	168
The inner mitochondrial membrane couples electron transport to ATP synthesis: <i>a closer look</i>	170
Cellular respiration generates many ATP molecules for each sugar molecule it oxidizes: <i>a review</i>	173
Fermentation enables some cells to produce ATP without the help of oxygen	174
Glycolysis and the Krebs cycle connect to many other metabolic pathways	177
Feedback mechanisms control cellular respiration	178

## CHAPTER 10

**Photosynthesis** 182

Plants and other autotrophs are the producers of the biosphere	182
Chloroplasts are the sites of photosynthesis in plants	184
Evidence that chloroplasts split water molecules enabled researchers to track atoms through photosynthesis: <i>science as a process</i>	185
The light reactions and the Calvin cycle cooperate in transforming light to the chemical energy of food: <i>an overview</i>	186
The light reactions convert solar energy to the chemical energy of ATP and NADPH: <i>a closer look</i>	187
The Calvin cycle uses ATP and NADPH to convert CO <sub>2</sub> to sugar: <i>a closer look</i>	196
Alternative mechanisms of carbon fixation have evolved in hot, arid climates	196
Photosynthesis is the biosphere's metabolic foundation: <i>a review</i>	200

## CHAPTER 11

**The Reproduction of Cells** 204

Cell division functions in reproduction, growth, and repair	204
Bacteria reproduce by binary fission	205
The genome of a eukaryotic cell is organized into multiple chromosomes	206
Mitosis alternates with interphase in the cell cycle: <i>an overview</i>	207
The mitotic spindle distributes chromosomes to daughter cells: <i>a closer look</i>	210
Cytokinesis divides the cytoplasm: <i>a closer look</i>	212
External and internal cues control cell division	214
Cyclical changes in regulatory proteins function as a mitotic clock	216
Cancer cells escape from the controls on cell division	217



### UNIT THREE

## THE GENE 222

### CHAPTER 12

## Meiosis and Sexual Life Cycles 225

Offspring acquire genes from parents by inheriting chromosomes 225

Like begets like, more or less: a comparison of asexual and sexual reproduction 226

Fertilization and meiosis alternate in sexual life cycles: *an overview* 226

Meiosis reduces chromosome number from diploid to haploid: *a closer look* 229

Sexual life cycles produce genetic variation among offspring 232

Evolutionary adaptation depends on a population's genetic variation 236

### CHAPTER 13

## Mendel and the Gene Idea 238

Mendel brought an experimental and quantitative approach to genetics: *science as a process* 238

According to the law of segregation, the two alleles for a character are packaged into separate gametes 240

According to the law of independent assortment, each pair of alleles segregates into gametes independently 244

Mendelian inheritance reflects rules of probability 245

Mendel discovered the particulate behavior of genes: *a review* 247

The relationship between genotype and phenotype is rarely simple 247

Pedigree analysis reveals Mendelian patterns in human inheritance 252

Many human disorders follow Mendelian patterns of inheritance 253

Technology is providing new tools for genetic testing and counseling 256

### CHAPTER 14

## The Chromosomal Basis of Inheritance 262

Mendelian inheritance has its physical basis in the behavior of chromosomes during sexual life cycles 262

Morgan traced a gene to a specific chromosome: *science as a process* 262

Linked genes tend to be inherited together because they are located on the same chromosome 265

Independent assortment of chromosomes and crossing over cause genetic recombination 266

Geneticists can use recombination data to map a chromosome's genetic loci 267

The chromosomal basis of sex produces unique patterns of inheritance 270

Alterations of chromosome number or structure cause some genetic disorders 273

The phenotypic effects of some genes depend on whether they were inherited from the mother or the father 276

Extranuclear genes exhibit a non-Mendelian pattern of inheritance 278

### CHAPTER 15

## The Molecular Basis of Inheritance 281

The search for the genetic material led to DNA: *science as a process* 281

Watson and Crick discovered the double helix by building models to conform to X-ray data: *science as a process* 284

During DNA replication, base pairing enables existing DNA strands to serve as templates for new complementary strands 287

A team of enzymes and other proteins functions in DNA replication 289

Enzymes proofread DNA during its replication and repair damage to existing DNA 293

### CHAPTER 16

## From Gene to Protein 297

The study of metabolic defects provided evidence that genes specify proteins: *science as a process* 297

Transcription and translation are the two main steps from gene to protein: *an overview* 299

In the genetic code, a particular triplet of nucleotides specifies a certain amino acid: *a closer look* 301

Transcription is the DNA-directed synthesis of RNA: *a closer look* 304

Translation is the RNA-directed synthesis of a polypeptide: *a closer look* 306

Some polypeptides have signal sequences that target them to specific destinations in the cell 313

Comparing protein synthesis in prokaryotes and eukaryotes: *a review* 314

Eukaryotic cells modify RNA after transcription	314
A point mutation can affect the function of a protein	317
What is a gene?	318

## CHAPTER 17

### Microbial Models: The Genetics of Viruses and Bacteria 324

Researchers discovered viruses by studying a plant disease: <i>science as a process</i>	324
Most viruses consist of a genome enclosed in a protein shell	325
Viruses can only reproduce within a host cell	326
Phages exhibit two reproductive cycles: the lytic and lysogenic cycles	327
Animal viruses are diverse in their modes of infection and mechanisms of replication	330
Plant viruses are serious agricultural pests	334
Viroids and prions are infectious agents even simpler than viruses	335
Viruses may have evolved from other mobile genetic elements	335
The short generation span of bacteria facilitates their evolutionary adaptation to changing environments	336
Genetic recombination and transposition produce new bacterial strains	337
The control of gene expression enables individual bacteria to adjust their metabolism to environmental change	344

## CHAPTER 18

### Genome Organization and Expression in Eukaryotes 351

Each cell of a multicellular eukaryote expresses only a small fraction of its genome	351
The structural organization of chromatin sets coarse controls on gene expression	352
Noncoding sequences and gene duplications account for much of a eukaryotic genome	354
The control of gene expression can occur at any step in the pathway from gene to functional protein	356
Chemical signals that help control gene expression include hormones	360
Chemical modification or relocation of DNA within a genome can alter gene expression	361
Cancer can result from the abnormal expression of genes that regulate cell growth and division	364

## CHAPTER 19

### DNA Technology 369

DNA technology makes it possible to clone genes for basic research and commercial applications: <i>an overview</i>	370
The toolkit for DNA technology includes restriction enzymes, DNA vectors, and host organisms	370

Recombinant DNA technology provides a means to transplant genes from one species into the genome of another	372
Additional methods for analyzing and cloning nucleotide sequences increase the power of DNA technology	376
DNA technology is catalyzing progress in many fields of biology	382
The Human Genome Project is an enormous collaborative effort to map and sequence DNA	384
DNA technology is reshaping the medical and pharmaceutical industries	385
DNA technology offers forensic, environmental, and agricultural applications	388
DNA technology raises important safety and ethical questions	392



## UNIT FOUR

### MECHANISMS OF EVOLUTION 396

## CHAPTER 20

### Descent with Modification: A Darwinian View of Life 399

Western culture resisted evolutionary views of life	399
Theories of geological gradualism helped clear the path for evolutionary biologists	402
Lamarck placed fossils in an evolutionary context	402
Field research helped Darwin frame his view of life: <i>science as a process</i>	403
The <i>Origin of Species</i> developed two main points: the occurrence of evolution and natural selection as its mechanism	405
Evidence from many fields of biology validates the evolutionary view of life	410
What is theoretical about the Darwinian view of life?	412

## CHAPTER 21

### The Evolution of Populations 416

The modern evolutionary synthesis integrated Darwinism and Mendelism: <i>science as a process</i>	416
A population has a genetic structure defined by its gene pool's allele and genotype frequencies	417
The Hardy-Weinberg theorem describes a nonevolving population	419
Microevolution is a generation-to-generation change in a population's allele or genotype frequencies: <i>an overview</i>	420
Genetic drift can cause evolution via chance fluctuation in a small population's gene pool: <i>a closer look</i>	421
Gene flow can cause evolution by transferring alleles between populations: <i>a closer look</i>	423
Mutations can cause evolution by substituting one allele for another in a gene pool: <i>a closer look</i>	423
Nonrandom mating can cause evolution by shifting the frequencies of genotypes in a gene pool: <i>a closer look</i>	424
Natural selection can cause evolution via differential reproductive success among varying members of a population: <i>a closer look</i>	425
Genetic variation is the substrate for natural selection	425
Natural selection is the mechanism of adaptive evolution	430
Does evolution fashion perfect organisms?	433

## CHAPTER 22

### The Origin of Species 436

The biological species concept emphasizes reproductive isolation	436
Reproductive barriers separate species	439
Geographical isolation can lead to the origin of species: allopatric speciation	441
A new species can originate in the geographical midst of the parent species: sympatric speciation	444
Population genetics can account for speciation	446
The theory of punctuated equilibrium has stimulated research on the tempo of speciation	449

## CHAPTER 23

### Tracing Phylogeny: Macroevolution, the Fossil Record, and Systematics 454

The fossil record documents macroevolution	455
Paleontologists use a variety of methods to date fossils	457
What are the major questions about macroevolution? <i>an overview</i>	460
Some evolutionary novelties are modified versions of older structures	460
Genes that control development play a major role in evolutionary novelty	460

Recognizing trends in the fossil record does not mean that macroevolution is goal-oriented	462
Macroevolution has a biogeographical basis in continental drift	465
The history of life is punctuated by mass extinctions followed by adaptive radiations of the survivors	467
Systematics connects biological diversity to phylogeny	469
Molecular biology provides powerful new tools for modern systematics	472
Cladistics highlights the phylogenetic significance of systematics	476
Is a new evolutionary synthesis necessary?	478



## UNIT FIVE

### THE EVOLUTIONARY HISTORY OF BIOLOGICAL DIVERSITY 482

## CHAPTER 24

### Early Earth and the Origin of Life 486

Life on Earth originated between 3.5 and 4.0 billion years ago	487
The first cells may have originated by chemical evolution on a young Earth: <i>an overview</i>	488
Abiotic synthesis of organic monomers is a testable hypothesis: <i>science as a process</i>	489
Laboratory simulations of early Earth conditions have produced organic polymers	490
Protobionts can form by self-assembly	490
RNA was probably the first genetic material	491
The origin of hereditary information made Darwinian evolution possible	492
Debate about the origin of life abounds	493
Arranging the diversity of life into kingdoms is a work in progress	494

## CHAPTER 25

### Prokaryotes and the Origins of Metabolic Diversity 498

They're (almost) everywhere! <i>an overview of prokaryotic life</i>	498
Archaea and Bacteria are the two main branches of prokaryotic evolution	499
The success of prokaryotic life is based on diverse adaptations of form and function	499
All major types of nutrition and metabolism evolved among prokaryotes	505
The evolution of prokaryotic metabolism was both cause and effect of changing environments on Earth	506
Molecular systematics is leading to a phylogenetic classification of prokaryotes	508
Prokaryotes continue to have an enormous ecological impact	512

## CHAPTER 26

### The Origins of Eukaryotic Diversity 518

Eukaryotes originated by symbiosis among prokaryotes	518
Archezoans provide clues to the early evolution of eukaryotes	520
The diversity of protists represents "experiments" in the evolution of eukaryotic organization	521
Protistan taxonomy is in a state of flux	523
Diverse modes of locomotion and feeding evolved among protozoa	523
Funguslike protists have morphological adaptations and life cycles that enhance their ecological role as decomposers	529
Eukaryotic algae are key producers in most aquatic ecosystems	532
Systematists continue to refine their hypotheses about eukaryotic phylogeny	541
Multicellularity originated independently many times	543

## CHAPTER 27

### Plants and the Colonization of Land 547

Structural and reproductive adaptations made the colonization of land possible: <i>an overview of plant evolution</i>	547
Plants probably evolved from green algae called charophytes	550
Bryophytes are embryophytes that generally lack vascular tissue and require environmental water to reproduce	552
The origin of vascular tissue was an evolutionary breakthrough in the colonization of land	555
Ferns and other seedless plants dominated the Carboniferous "coal forests"	556

Reproductive adaptations catalyzed the success of the seed plants	560
Gymnosperms began to dominate landscapes as climates became drier at the end of the Paleozoic era	560
The evolution of flowers and fruits contributed to the radiation of angiosperms	564
Plant diversity is a nonrenewable resource	569

## CHAPTER 28

### Fungi 573

Structural and life history adaptations equip fungi for an absorptive mode of nutrition	573
The three major divisions of fungi differ in details of reproduction	576
Molds, yeasts, lichens, and mycorrhizae represent unique lifestyles that evolved independently in all fungal divisions	581
Fungi have a tremendous ecological impact	584
Fungi and animals probably evolved from a common protistan ancestor	585

## CHAPTER 29

### Invertebrates and the Origin of Animal Diversity 589

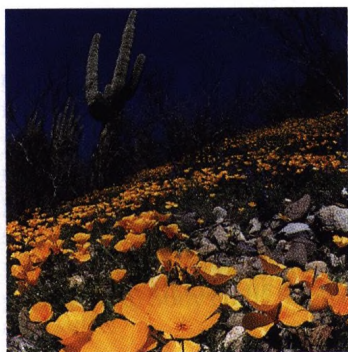
What is an animal?	589
Comparative anatomy and embryology provide clues to animal phylogeny: <i>an overview of animal diversity</i>	590
Sponges are sessile animals lacking true tissues	594
Cnidarians with ctenophores are radiate, diploblastic animals with gastrovascular cavities	596
Flatworms and other acoelomates are bilateral, triploblastic animals lacking body cavities	599
Rotifers, nematodes, and other pseudocoelomates have complete digestive tracts and blood vascular systems	602
Mollusks and annelids are among the major variations on the protostome body plan	603
The protostome phylum Arthropoda is the most successful group of animals ever to live	609
The deuterostome lineage includes echinoderms and chordates	620
The Cambrian explosion produced all the major animal body plans	622

## CHAPTER 30

### The Vertebrate Genealogy 628

Vertebrates belong to the phylum Chordata	628
Invertebrate chordates provide clues to the origin of vertebrates	629
The evolution of vertebrate characteristics is associated with increased size and activity	631
Vertebrate diversity and phylogeny: <i>an overview</i>	632
Agnathans are jawless vertebrates	634

Placoderms were armored fishes with jaws and paired fins	635
Sharks and their relatives have adaptations for powerful swimming	636
Bony fishes are the most abundant and diverse vertebrates	637
Amphibians are the oldest class of tetrapods	640
The evolution of the amniotic egg expanded the success of vertebrates on land	642
A reptilian heritage is evident in all amniotes	643
Birds began as flying reptiles	647
Mammals diversified extensively in the wake of the Cretaceous extinctions	649
Primate evolution provides a context for understanding human origins	654
Humanity is one very young twig on the vertebrate tree	656



## UNIT SIX

# PLANTS: FORM AND FUNCTION 666

## CHAPTER 31

### Plant Structure and Growth 668

Plant biology reflects the major themes in the study of life	668
A plant's root and shoot systems are evolutionary adaptations to living on land	670
The many types of plant cells are organized into three major tissue systems	675
Meristems generate cells for new organs throughout the lifetime of a plant: <i>an overview of plant growth</i>	679
Apical meristems extend roots and shoots: <i>a closer look at primary growth</i>	681
Lateral meristems add girth to stems and roots: <i>a closer look at secondary growth</i>	686

## CHAPTER 32

### Transport in Plants 692

The traffic of water and solutes occurs on cellular, organ, and whole-plant levels: <i>an overview of transport in plants</i>	692
Roots absorb water and minerals from soil	697
The ascent of xylem sap depends mainly on transpiration and the physical properties of water	699
Guard cells mediate the transpiration-photosynthesis compromise	701
A bulk-flow mechanism translocates phloem sap from sugar sources to sugar sinks	705

## CHAPTER 33

### Plant Nutrition 711

Plants require at least seventeen essential nutrients	711
The symptoms of a mineral deficiency depend on the function and mobility of the element	713
Soil characteristics are key environmental factors in terrestrial ecosystems	715
Soil conservation is one step toward sustainable agriculture	717
The metabolism of soil bacteria makes nitrogen available to plants	719
Improving the protein yield of crops is a major goal of agricultural research	721
Predation and symbiosis are evolutionary adaptations that enhance plant nutrition	722

## CHAPTER 34

### Plant Reproduction and Development 727

Sporophyte and gametophyte generations alternate in the life cycles of plants: <i>an overview</i>	727
Male and female gametophytes develop within anthers and ovaries, respectively	731
Pollination brings female and male gametophytes together	732
The ovule develops into a seed containing a sporophyte embryo and a supply of nutrients	733
The ovary develops into a fruit adapted for seed dispersal	735
Evolutionary adaptations in the process of germination increase the probability that seedlings will survive	736
Many plants can clone themselves by asexual reproduction	738
Vegetative reproduction of plants is common in agriculture	739
Sexual and asexual reproduction are complementary in the life histories of many plants: <i>a review</i>	741
Growth, morphogenesis, and differentiation produce the plant body: <i>an overview of developmental mechanisms in plants</i>	742

The cytoskeleton guides the geometry of cell division and expansion: <i>a closer look</i>	743
Cellular differentiation depends on the control of gene expression: <i>a closer look</i>	744
Mechanisms of pattern formation determine the location and tissue organization of plant organs: <i>a closer look</i>	745

## CHAPTER 35

### Control Systems in Plants 750

Research on how plants grow toward light led to the discovery of plant hormones: <i>science as a process</i>	751
Plant hormones help coordinate growth, development, and responses to environmental stimuli	753
Tropisms orient the growth of plant organs toward or away from stimuli	760
Turgor movements are relatively rapid, reversible plant responses	762
Biological clocks control circadian rhythms in plants and other eukaryotes	763
Photoperiodism synchronizes many plant responses to changes of season	764
Phytochrome functions as a photoreceptor in many plant responses to light and photoperiod	766
Control systems enable plants to cope with environmental stress	768
Signal-transduction pathways mediate the responses of plant cells to environmental and hormonal stimuli	770



## UNIT SEVEN

### ANIMALS: FORM AND FUNCTION 776

#### CHAPTER 36

#### An Introduction to Animal Structure and Function 779

The functions of animal tissues and organs are correlated with their structures	780
Bioenergetics is fundamental to all animal functions	785
An animal's size and shape affect its interactions with the external environment	789
Homeostatic mechanisms regulate an animal's internal environment	790

#### CHAPTER 37

#### Animal Nutrition 796

Diets and feeding mechanisms vary extensively among animals	796
Ingestion, digestion, absorption, and elimination are the four main stages of food processing	797
Digestion occurs in food vacuoles, gastrovascular cavities, and alimentary canals	798
A tour of the mammalian digestive system	801
Vertebrate digestive systems exhibit many evolutionary adaptations associated with diet	808
An adequate diet provides fuel, carbon skeletons for biosynthesis, and essential nutrients	810

#### CHAPTER 38

#### Circulation and Gas Exchange 819

Transport systems functionally connect body cells with the organs of exchange: <i>an overview</i>	819
Most invertebrates have a gastrovascular cavity or a circulatory system for internal transport	820
Diverse adaptations of a cardiovascular system have evolved in vertebrates	821
Rhythmic pumping of the human heart drives blood through pulmonary and systemic circuits	823

The lymphatic system returns fluid to the blood and aids in body defense	830
Blood is a connective tissue with cells suspended in plasma	831
Cardiovascular diseases are the leading cause of death in the United States and many other developed nations	834
Gas exchange supplies oxygen for cellular respiration and disposes of carbon dioxide: <i>an overview</i>	836
Gills are respiratory adaptations of most aquatic animals	838
Tracheae are respiratory adaptations of insects	840
Lungs are the respiratory adaptation of most terrestrial vertebrates	841

## CHAPTER 39

### The Body's Defenses 852

Nonspecific mechanisms provide general barriers to infection	852
The immune system defends the body against specific invaders: <i>an overview</i>	856
Clonal selection of lymphocytes is the cellular basis for immunological specificity and diversity	859
Memory cells function in secondary immune responses	860
Molecular markers on cell surfaces function in self/nonself recognition	860
In the humoral response, B cells defend against pathogens in body fluids by generating specific antibodies	860
In the cell-mediated response, T cells defend against intracellular pathogens	867
Complement proteins participate in both nonspecific and specific defenses	870
The immune system's capacity to distinguish self from nonself is critical in blood transfusion and transplantation	871
Abnormal immune function leads to disease states	872
Invertebrates exhibit a rudimentary immune system	875

## CHAPTER 40

### Controlling the Internal Environment 879

Homeostatic mechanisms protect an animal's internal environment from harmful fluctuations: <i>an overview</i>	879
Cells require a balance between water uptake and loss	880
Osmoregulation depends on transport epithelia	883
Tubular systems function in osmoregulation and excretion in many invertebrates	884
The kidneys of most vertebrates are compact organs with many excretory tubules	886
The kidney's transport epithelia regulate the composition of blood	888

The water-conserving ability of the mammalian kidney is a key terrestrial adaptation	892
Diverse adaptations of the vertebrate kidney have evolved in different habitats	896
An animal's nitrogenous wastes are correlated with its phylogeny and habitat	896
Thermoregulation maintains body temperature within a range conducive to metabolism	898
Ectotherms derive body heat mainly from their surroundings and endotherms derive it mainly from metabolism	899
Thermoregulation involves physiological and behavioral adjustments	900
Comparative physiology reveals diverse mechanisms of thermoregulation	901
Regulatory systems interact in the maintenance of homeostasis	906

## CHAPTER 41

### Chemical Signals in Animals 912

A variety of chemical signals coordinates body functions: <i>an overview</i>	912
Hormone binding to specific receptors triggers signaling mechanisms at the cellular level	915
Many chemical signals are relayed and amplified by second messengers and protein kinases	917
Invertebrate control systems often integrate endocrine and nervous system functions	921
The hypothalamus and pituitary integrate many functions of the vertebrate endocrine system	922
The vertebrate endocrine system coordinates homeostasis and regulates growth, development, and reproduction	927
The endocrine system and the nervous system are structurally, chemically, and functionally related	934

## CHAPTER 42

### Animal Reproduction 937

Both asexual and sexual reproduction occur in the animal kingdom	937
In sexual reproduction, gametes unite in the external environment or within the female	940
Diverse reproductive systems have evolved in the animal kingdom	941
Human reproduction involves intricate anatomy and complex behavior	943
Spermatogenesis and oogenesis both involve meiosis but differ in three significant ways	947
A complex interplay of hormones regulates reproduction	950
Embryonic and fetal development occur during pregnancy in humans and other placental mammals	953
Contraception prevents pregnancy	957
New technologies offer help for reproductive problems	959

## CHAPTER 43

### Animal Development 963

From egg to organism, an animal's form develops gradually: <i>the concept of epigenesis</i>	963
Embryonic development involves cell division, differentiation, and morphogenesis	964
Fertilization activates the egg and brings together the nuclei of sperm and egg	965
Cleavage partitions the zygote into many smaller cells	968
Gastrulation rearranges the blastula to form a three-layered embryo with a primitive gut	971
Organogenesis forms the organs of the animal body from the three embryonic germ layers	973
Amniote embryos develop in a fluid-filled sac within a shell or uterus	975
The developmental fate of cells depends on cytoplasmic environment, location, and cell-cell interactions	978
Pattern formation in <i>Drosophila</i> is controlled by a hierarchy of gene activations	986
Comparisons of genes that control development reveal homology in animals as diverse as flies and mammals	989

## CHAPTER 44

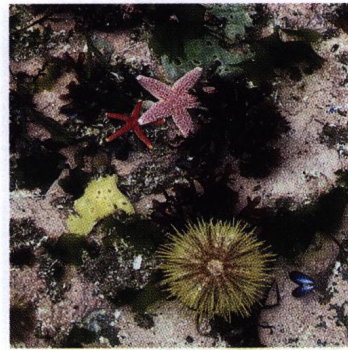
### Nervous Systems 993

Nervous systems perform the three overlapping functions of sensory input, integration, and motor output: <i>an overview</i>	994
The nervous system is composed of neurons and supporting cells	994
Impulses are action potentials, electrical signals propagated along neuronal membranes	996
Chemical or electrical communication between cells occurs at synapses	1003
Invertebrate nervous systems are highly diverse	1010
The vertebrate nervous system is a hierarchy of structural and functional complexity	1011
The human brain is a major research frontier	1015

## CHAPTER 45

### Sensory and Motor Mechanisms 1026

Sensory receptors detect changes in the external and internal environment: <i>an overview</i>	1026
Photoreceptors contain light-absorbing visual pigments: <i>a closer look</i>	1030
Hearing and balance are related in most animals: <i>a closer look</i>	1037
The interacting senses of taste and smell enable animals to detect many different chemicals: <i>a closer look</i>	1042
Movement is a hallmark of animals	1044
Skeletons support and protect the animal body and are essential to movement	1045
Muscles move skeletal parts by contracting	1048



## UNIT EIGHT

### ECOLOGY 1058

## CHAPTER 46

### An Introduction to Ecology: Distribution and Adaptations of Organisms 1061

Ecology is the scientific study of the interactions between organisms and their environments	1061
Basic ecology provides a scientific context for evaluating environmental issues	1062
Ecological research ranges from the adaptations of organisms to the dynamics of ecosystems	1062
Climate and other abiotic factors are important determinants of the biosphere's distribution of organisms	1063
The costs and benefits of homeostasis affect an organism's responses to environmental variation	1069
The response mechanisms of organisms are related to environmental grain and the time scale of environmental variation	1071
The geographical distribution of terrestrial biomes is based mainly on regional variations in climate	1073
Aquatic ecosystems, consisting of freshwater and marine biomes, occupy the largest part of the biosphere	1081

## CHAPTER 47

### Population Ecology 1093

Two important characteristics of any population are its density and the spacing of individuals	1094
Demography is the study of factors that affect birth and death rates in a population	1096
The traits that affect an organism's schedule of reproduction and death make up its life history	1099
A mathematical model for exponential growth describes an idealized population in an unlimited environment	1104
A logistic model of population growth incorporates the concept of carrying capacity	1106

Both density-dependent and density-independent factors can affect population growth 1109

The human population has been growing exponentially for centuries, but will not be able to do so indefinitely 1113

#### CHAPTER 48

### Community Ecology 1118

The interactive and individualistic hypotheses pose alternative explanations of community structure: *science as a process* 1118

Community interactions can provide strong selection factors in evolution 1120

Interspecific interactions may have positive, negative, or neutral effects on a population's density: *an overview* 1121

Predation and parasitism are (+ -) interactions: *a closer look* 1122

Interspecific competitions are (- -) interactions: *a closer look* 1125

Commensalism and mutualism are (+ 0) and (+ +) interactions, respectively: *a closer look* 1128

A community's structure is defined by the activities and abundance of its diverse organisms 1130

The factors that structure communities include competition, predation, and environmental patchiness 1131

Succession is the sequence of changes in a community after a disturbance 1134

Biogeography complements community ecology in the analysis of species distribution 1138

Lessons from community ecology and biogeography can help preserve biodiversity 1141

#### CHAPTER 49

### Ecosystems 1145

Trophic structure determines an ecosystem's routes of energy flow and chemical cycling 1145

An ecosystem's energy budget depends on primary productivity 1148

As energy flows through an ecosystem, much is lost at each trophic level 1150

Matter cycles within and between ecosystems 1152

A combination of biological and geological processes drives chemical cycles 1154

Field experiments reveal how vegetation regulates chemical cycling: *science as a process* 1158

The human population is disrupting chemical cycles throughout the biosphere 1160

Human activities are altering species distribution and reducing biodiversity 1165

The Sustainable Biosphere Initiative is reorienting ecological research 1169

#### CHAPTER 50

### Behavior 1172

Behavior is what an animal does and how it does it 1173

Behavioral ecology emphasizes evolutionary hypotheses: *science as a process* 1173

A behavior has both an ultimate and a proximate cause 1174

Certain stimuli trigger innate behaviors called fixed action patterns 1176

Learning is experience-based modification of behavior 1180

Rhythmic behaviors synchronize an animal's activities with daily and seasonal changes in the environment 1186

Environmental cues guide animal movement 1187

Behavioral ecologists are using cost/benefit analysis to study foraging behavior 1189

Sociobiology places social behavior in an evolutionary context 1191

Competitive social behaviors often represent contests for resources 1192

Mating behavior relates directly to an animal's fitness 1194

Social interactions depend on diverse modes of communication 1198

The concept of inclusive fitness can account for most altruistic behavior 1200

Human sociobiology connects biology to the humanities and social sciences 1202

#### APPENDIX ONE

### Self-Quiz Answers A-1

#### APPENDIX TWO

### The Metric System A-3

#### APPENDIX THREE

### Classification of Life A-4

#### APPENDIX FOUR

### A Comparison of the Light Microscope and the Electron Microscope A-6

#### CREDITS C-1

#### GLOSSARY G-1

#### INDEX I-1