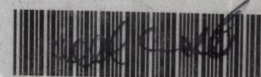


# CALCULUS 6e

C. HENRY EDWARDS & DAVID E. PENN

City University Library Slovakia



Y2001362

## New Media Supplements

### PH Grade Assist

Approximately 2000 of the text's exercises are included in a new algorithmically generated on-line homework delivery service that allows instructors to distribute, collect, grade, and record assignments. Functions also as a homework study device and as a testing program.



### STUDENT CD-ROM INCLUDED

This new Student CD-ROM works seamlessly with the text to enliven text material. It is an incredibly useful teaching and learning tool and features:



- **Live Examples** The heart of this CD is in the Live Examples. The traditional text environment has been enhanced and brought to life with animations and questions exploring what-if scenarios. More than 500 live examples are provided.
- **Homework Starters** These hints often include geometric animations. There are more than 300 Homework Starters included, some of which also have short 3-5 minute movies supplying blackboard instruction that details how to think about getting started.
- **True/False Study Guides** There are more than 1000 T/F questions that are specifically designed to encourage students to read actively (not just thumb through the text to find examples matching the questions).
- **Computing Projects** Three dozen projects are scattered throughout both the text and CD. Projects included on the CD greatly expand the text detail and explain how to use a given technology whether it be Maple or *Mathematica*, MATLAB or a TI Calculator.
- **Maple Worksheets** The whole text has been translated into Maple worksheets. (Users must have Maple software to use this feature.) The full computing power and graphics package of Maple is now at your fingertips.
- **PowerPoint Slides** Over 300 PowerPoint slides featuring text art and graphics are included. These timesaving slides help to eliminate the need to draw complicated graphics on a blackboard.

These are unabridged paperback reprints of established titles widely used by universities and colleges throughout the world. Pearson Education International publishes these lower-priced editions for the benefit of students.

This edition may be sold only in those countries to which it is consigned by Pearson Education International. It is not to be re-exported, and is not for sale in the U.S.A., Mexico, or Canada.

Pearson  
Education

Prentice Hall, USR  
New Jersey 07458  
[www.prenhall.com/edwards](http://www.prenhall.com/edwards)

ISBN 0-13-095006-8



9 0000



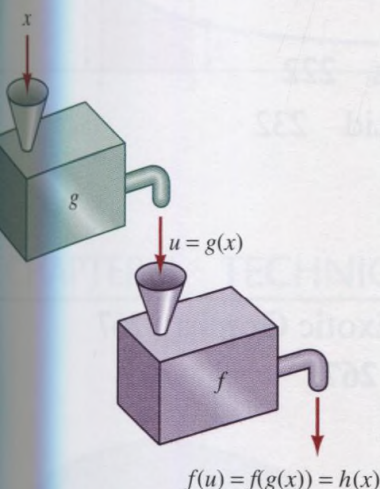
9 780130 950062

Prentice Hall International Editions



# CHAPTER 1 FUNCTIONS, GRAPHS, AND MODELS

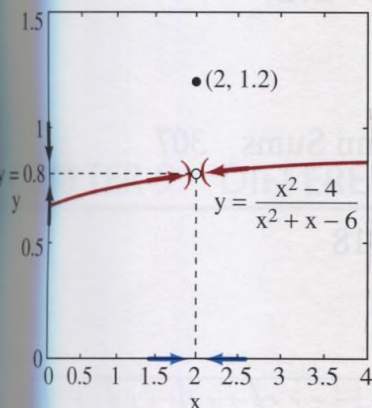
1



|     |   |    |
|-----|---|----|
| 1.1 | Functions and Mathematical Modeling     | 2  |
|     | <b>PROJECT:</b> A Square Wading Pool    | 11 |
| 1.2 | Graphs of Equations and Functions       | 12 |
|     | <b>PROJECT:</b> A Broken Tree           | 23 |
| 1.3 | Polynomials and Algebraic Functions     | 24 |
|     | <b>PROJECT:</b> A Leaning Ladder        | 33 |
| 1.4 | Transcendental Functions                | 33 |
|     | <b>PROJECT:</b> A Spherical Asteroid    | 45 |
| 1.5 | Preview: What Is Calculus?              | 45 |
|     | <b>REVIEW: Definitions and Concepts</b> | 48 |

# CHAPTER 2 PRELUDE TO CALCULUS

53



|     |  |    |
|-----|--|----|
| 2.1 | Tangent Lines and Slope Predictors                           | 54 |
|     | <b>PROJECT:</b> Numerical Slope Investigations               | 63 |
| 2.2 | The Limit Concept  | 63 |
|     | <b>PROJECT:</b> Limits, Slopes, and Logarithms               | 74 |
| 2.3 | More About Limits  | 75 |
|     | <b>PROJECT:</b> Numerical Epsilon-Delta Limit Investigations | 87 |
| 2.4 | The Concept of Continuity                                    | 88 |
|     | <b>REVIEW: Definitions, Concepts, Results</b>                | 99 |

# CHAPTER 3 THE DERIVATIVE

101

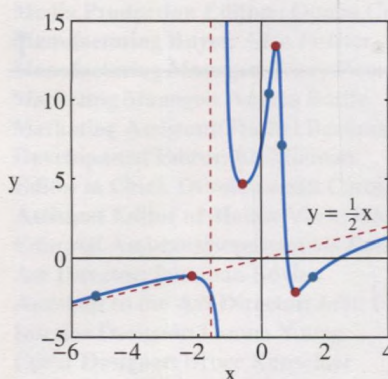
|     |                                    |     |
|-----|------------------------------------|-----|
| 3.1 | The Derivative and Rates of Change | 102 |
| 3.2 | Basic Differentiation Rules        | 115 |
| 3.3 | The Chain Rule                     | 126 |
| 3.4 | Derivatives of Algebraic Functions | 133 |





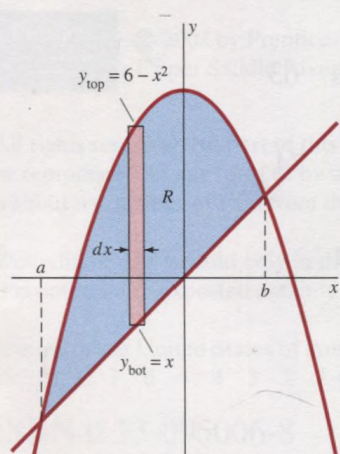
- 3.5 Maxima and Minima of Functions on Closed Intervals 142  
**PROJECT:** When Is Your Coffee Cup Stablest? 150  
3.6 Applied Optimization Problems 152  
3.7 Derivatives of Trigonometric Functions 165  
3.8 Successive Approximations and Newton's Method 176  
**PROJECT:** How Deep Does a Floating Ball Sink? 188  
**REVIEW: Formulas, Concepts, Definitions** 189

## CHAPTER 4 ADDITIONAL APPLICATIONS OF THE DERIVATIVE



- 4.1 Implicit Functions and Related Rates 194  
**PROJECT:** Investigating the Folium of Descartes 203  
4.2 Increments, Differentials, and Linear Approximation 204  
4.3 Increasing and Decreasing Functions and the Mean Value Theorem 212  
4.4 The First Derivative Test and Applications 222  
**PROJECT:** Making a Candy Box With Lid 232  
4.5 Simple Curve Sketching 232  
4.6 Higher Derivatives and Concavity 242  
4.7 Curve Sketching and Asymptotes 256  
**PROJECT:** Locating Special Points on Exotic Graphs 267  
**REVIEW: Definitions, Concepts, Results** 267

## CHAPTER 5 THE INTEGRAL

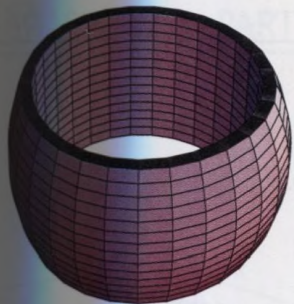


- 5.1 Introduction 272  
5.2 Antiderivatives and Initial Value Problems 272  
5.3 Elementary Area Computations 286  
5.4 Riemann Sums and the Integral 298  
**PROJECT:** Calculator/Computer Riemann Sums 307  
5.5 Evaluation of Integrals 308  
5.6 The Fundamental Theorem of Calculus 318  
5.7 Integration by Substitution 328  
5.8 Areas of Plane Regions 336  
5.9 Numerical Integration 346  
**PROJECT:** Trapezoidal and Simpson Approximations 359  
**REVIEW: Definitions, Concepts, Results** 361

## CHAPTER 6 APPLICATIONS OF THE INTEGRAL

- 6.1 Riemann Sum Approximations 366  
6.2 Volumes by the Method of Cross Sections 376

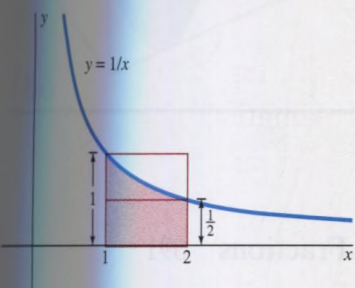




- 6.3 Volumes by the Method of Cylindrical Shells 387  
**PROJECT: Design Your Own Ring!** 395
- 6.4 Arc Length and Surface Area of Revolution 396
- 6.5 Force and Work 405
- 6.6 Centroids of Plane Regions and Curves 416  
**REVIEW: Definitions, Concepts, Results** 423

## CHAPTER 7 CALCULUS OF TRANSCENDENTAL FUNCTIONS

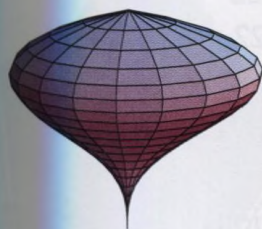
427



- 7.1 Exponential and Logarithmic Functions 428  
**PROJECT: Discovering the Number  $e$  for Yourself** 441
- 7.2 Indeterminate Forms and L'Hôpital's Rule 441
- 7.3 More Indeterminate Forms 449
- 7.4 The Natural Logarithm as an Integral 455  
**PROJECT: Natural Functional Equations** 466
- 7.5 Inverse Trigonometric Functions 467
- 7.6 Hyperbolic Functions 477  
**REVIEW: Formulas, Concepts, Definitions** 485

## CHAPTER 8 TECHNIQUES OF INTEGRATION

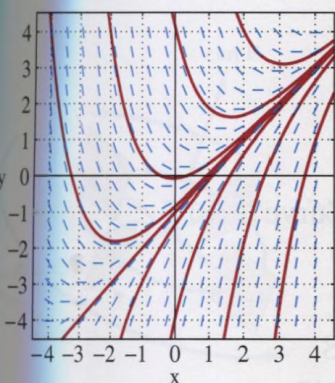
489



- 8.1 Introduction 490
- 8.2 Integral Tables and Simple Substitutions 490
- 8.3 Integration by Parts 494
- 8.4 Trigonometric Integrals 501
- 8.5 Rational Functions and Partial Fractions 508
- 8.6 Trigonometric Substitution 515
- 8.7 Integrals Involving Quadratic Polynomials 521
- 8.8 Improper Integrals 526  
**Summary** 539

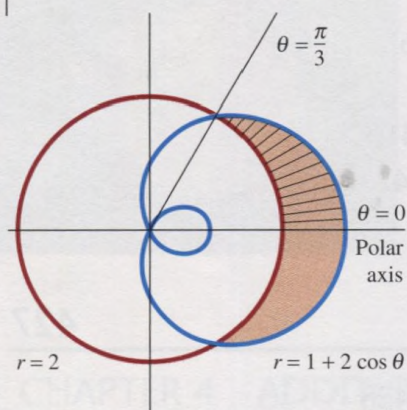
## CHAPTER 9 DIFFERENTIAL EQUATIONS

545



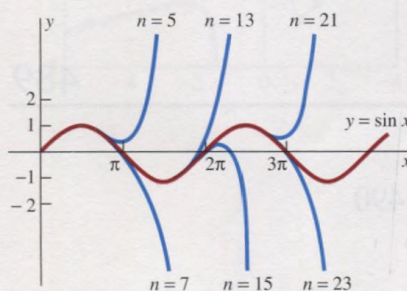
- 9.1 Simple Equations and Models 546
- 9.2 Slope Fields and Euler's Method 558  
**PROJECT: Computer-Assisted Slope Fields and Euler's Method** 567
- 9.3 Separable Equations and Applications 568
- 9.4 Linear Equations and Applications 575
- 9.5 Population Models 587  
**PROJECT: Predator-Prey Equations and Your Own Game Preserve** 597
- 9.6 Linear Second-Order Equations 598
- 9.7 Mechanical Vibrations 607  
**REVIEW: Definitions, Concepts, Results** 618





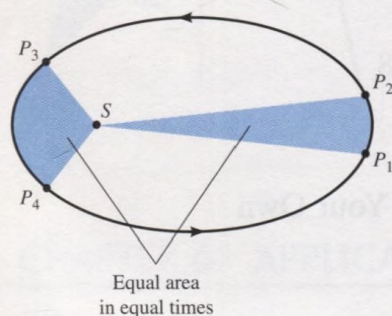
- 10.1 Analytic Geometry and the Conic Sections 624
- 10.2 Polar Coordinates 629
- 10.3 Area Computations in Polar Coordinates 638
- 10.4 Parametric Curves 643
- PROJECT:** Trochoid Investigations 652
- 10.5 Integral Computations with Parametric Curves 653
- PROJECT:** Moon Orbits and Race Tracks 660
- 10.6 Conic Sections and Applications 661
- REVIEW: Concepts and Definitions** 679

## CHAPTER 11 INFINITE SERIES



- 11.1 Introduction 682
- 11.2 Infinite Sequences 682
- PROJECT:** Nested Radicals and Continued Fractions 691
- 11.3 Infinite Series and Convergence 691
- PROJECT:** Numerical Summation and Geometric Series 701
- 11.4 Taylor Series and Taylor Polynomials 702
- PROJECT:** Calculating Logarithms on a Deserted Island 715
- 11.5 The Integral Test 715
- PROJECT:** The Number  $\pi$ , Once and for All 722
- 11.6 Comparison Tests for Positive-Term Series 722
- 11.7 Alternating Series and Absolute Convergence 728
- 11.8 Power Series 737
- 11.9 Power Series Computations 750
- PROJECT:** Calculating Trigonometric Functions on a Deserted Island 758
- 11.10 Series Solutions of Differential Equations 758
- REVIEW: Definitions, Concepts, Results** 767

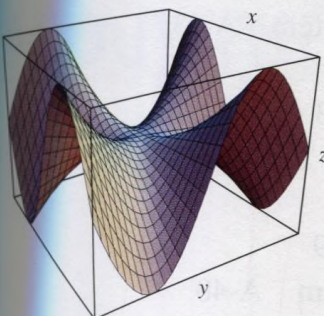
## CHAPTER 12 VECTORS, CURVES, AND SURFACES IN SPACE



- 12.1 Vectors in the Plane 772
- 12.2 Three-Dimensional Vectors 778
- 12.3 The Cross Product of Vectors 788
- 12.4 Lines and Planes in Space 796
- 12.5 Curves and Motion in Space 803
- PROJECT:** Does a Pitched Baseball Really Curve? 816
- 12.6 Curvature and Acceleration 817
- 12.7 Cylinders and Quadric Surfaces 830
- 12.8 Cylindrical and Spherical Coordinates 838
- REVIEW: Definitions, Concepts, Results** 845



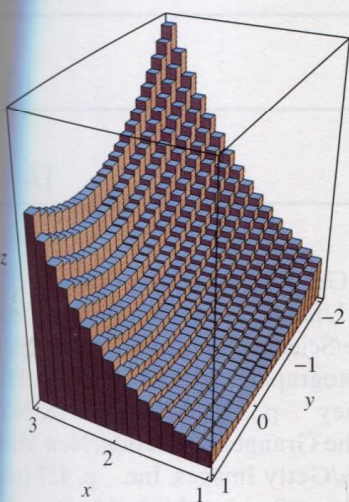
- 13.1 Introduction 850  
 13.2 Functions of Several Variables 850  
 13.3 Limits and Continuity 860  
 13.4 Partial Derivatives 868  
 13.5 Multivariable Optimization Problems 878  
 13.6 Increments and Linear Approximation 889  
 13.7 The Multivariable Chain Rule 896  
 13.8 Directional Derivatives and the Gradient Vector 907  
 13.9 Lagrange Multipliers and Constrained Optimization 918  
 ● **PROJECT:** Numerical Solution of Lagrange Multiplier Systems 927  
 13.10 Critical Points of Functions of Two Variables 927  
 ● **PROJECT:** Critical Point Investigations 935  
**REVIEW: Definitions, Concepts, Results 936**



## CHAPTER 14 MULTIPLE INTEGRALS

939

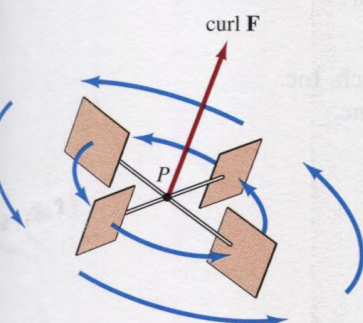
- 14.1 Double Integrals 940  
 ● **PROJECT:** Midpoint Sums Approximating Double Integrals 947  
 14.2 Double Integrals over More General Regions 947  
 14.3 Area and Volume by Double Integration 954  
 14.4 Double Integrals in Polar Coordinates 961  
 14.5 Applications of Double Integrals 968  
**PROJECT:** Optimal Design of Downhill Race-Car Wheels 978  
 14.6 Triple Integrals 979  
 ● **PROJECT:** Archimedes' Floating Paraboloid 987  
 14.7 Integration in Cylindrical and Spherical Coordinates 988  
 14.8 Surface Area 996  
 14.9 Change of Variables in Multiple Integrals 1001  
**REVIEW: Definitions, Concepts, Results 1009**



## CHAPTER 15 VECTOR CALCULUS

1013

- 15.1 Vector Fields 1014  
 15.2 Line Integrals 1019  
 15.3 The Fundamental Theorem and Independence of Path 1030  
 15.4 Green's Theorem 1037  
 15.5 Surface Integrals 1047  
 ● **PROJECT:** Surface Integrals and Rocket Nose Cones 1057  
 15.6 The Divergence Theorem 1057  
 15.7 Stokes' Theorem 1065  
**REVIEW: Definitions, Concepts, Results 1072**





|    |   |      |
|----|---|------|
| A: | Real Numbers and Inequalities                     | A-1  |
| B: | The Coordinate Plane and Straight Lines           | A-6  |
| C: | Review of Trigonometry                            | A-13 |
| D: | Proofs of the Limit Laws                          | A-19 |
| E: | The Completeness of the Real Number System        | A-23 |
| F: | Existence of the Integral                         | A-28 |
| G: | Approximations and Riemann Sums                   | A-33 |
| H: | L'Hôpital's Rule and Cauchy's Mean Value Theorem  | A-36 |
| I: | Proof of Taylor's Formula                         | A-38 |
| J: | Conic Sections as Sections of a Cone              | A-39 |
| K: | Proof of the Linear Approximation Theorem         | A-40 |
| L: | Units of Measurement and Conversion Factors       | A-41 |
| M: | Formulas from Algebra, Geometry, and Trigonometry | A-42 |
| N: | The Greek Alphabet                                | A-44 |

## ANSWERS TO ODD-NUMBERED PROBLEMS

A-45

## REFERENCES FOR FURTHER STUDY

A-99

## INDEX

I-1

## TABLE OF INTEGRALS

TA-1

**PHOTO CREDITS** p. 1. CORBIS p. 53 (top left) Getty Images, Inc.; (bottom left) Courtesy of International Business Machines Corporation. Unauthorized use not permitted. (right) Navy Visual News Service p. 101 Wards Science/Science Source; (bottom right) C. H. Edwards p. 163 Richard Megna/Fundamental Photographs p. 193 (top left) The Royal Society of London; (bottom right) David E. Penney p. 271 Art Resource, N.Y. p. 282 Richard Megna/Fundamental Photographs p. 365 The Granger Collection, New York p. 407 Lucas Bruno/AP/World Wide Photos p. 410 Omnia/Getty Images, Inc. p. 427 (top left) from *Portraits of Eminent Mathematicians* by David Eugene Smith published by Pictorial Mathematics, New York, 1936; (bottom right) Getty Images, Inc./PhotoDisc, Inc. p. 489 (top left) Library of Congress p. 545 CORBIS p. 623 (top left) Stock Montage, Inc./Historical Pictures Collection; (bottom right) Stephen Gerard/Science Service/Photo Researchers, Inc. p. 681 (top left) University of Cambridge; (bottom right) Image by David E. Penney p. 804 Robert Garvey/Black Star p. 849 Courtesy of the Library of Congress p. 939 (top left) The Granger Collection, New York; (bottom right) Jeff Greenberg/PhotoEdit p. 1013 (top left) CORBIS; (bottom right) Chandra X-Ray Center/A. Hobart

Maple is a registered trademark of Waterloo Maple Inc.

*Mathematica* is a registered trademark of Wolfram Research, Inc.

MATLAB is a registered trademark of The MathWorks, Inc.



|    |   |      |
|----|---|------|
| A: | Real Numbers and Inequalities                     | A-1  |
| B: | The Coordinate Plane and Straight Lines           | A-6  |
| C: | Review of Trigonometry                            | A-13 |
| D: | Proofs of the Limit Laws                          | A-19 |
| E: | The Completeness of the Real Number System        | A-23 |
| F: | Existence of the Integral                         | A-28 |
| G: | Approximations and Riemann Sums                   | A-33 |
| H: | L'Hôpital's Rule and Cauchy's Mean Value Theorem  | A-36 |
| I: | Proof of Taylor's Formula                         | A-38 |
| J: | Conic Sections as Sections of a Cone              | A-39 |
| K: | Proof of the Linear Approximation Theorem         | A-40 |
| L: | Units of Measurement and Conversion Factors       | A-41 |
| M: | Formulas from Algebra, Geometry, and Trigonometry | A-42 |
| N: | The Greek Alphabet                                | A-44 |

## ANSWERS TO ODD-NUMBERED PROBLEMS

A-45

## REFERENCES FOR FURTHER STUDY

A-99

## INDEX

I-1

## TABLE OF INTEGRALS

TA-1

**PHOTO CREDITS** p. 1. CORBIS p. 53 (top left) Getty Images, Inc.; (bottom left) Courtesy of International Business Machines Corporation. Unauthorized use not permitted. (right) Navy Visual News Service p. 101 Wards Science/Science Source; (bottom right) C. H. Edwards p. 163 Richard Megna/Fundamental Photographs p. 193 (top left) The Royal Society of London; (bottom right) David E. Penney p. 271 Art Resource, N.Y. p. 282 Richard Megna/Fundamental Photographs p. 365 The Granger Collection, New York p. 407 Lucas Bruno/AP/World Wide Photos p. 410 Omnia/Getty Images, Inc. p. 427 (top left) from *Portraits of Eminent Mathematicians* by David Eugene Smith published by Pictorial Mathematics, New York, 1936; (bottom right) Getty Images, Inc./PhotoDisc, Inc. p. 489 (top left) Library of Congress p. 545 CORBIS p. 623 (top left) Stock Montage, Inc./Historical Pictures Collection; (bottom right) Stephen Gerard/Science Service/Photo Researchers, Inc. p. 681 (top left) University of Cambridge; (bottom right) Image by David E. Penney p. 804 Robert Garvey/Black Star p. 849 Courtesy of the Library of Congress p. 939 (top left) The Granger Collection, New York; (bottom right) Jeff Greenberg/PhotoEdit p. 1013 (top left) CORBIS; (bottom right) Chandra X-Ray Center/A. Hobart

Maple is a registered trademark of Waterloo Maple Inc.

*Mathematica* is a registered trademark of Wolfram Research, Inc.

MATLAB is a registered trademark of The MathWorks, Inc.