

Detailed Contents

Brief Contents iii | About the Author iv | An Introduction for Students Using This Textbook vi | Author's Guide to Using This Textbook vii | McGraw Hill Connect® x | Changes to This Release xii | Acknowledgments xv

UNIT 1 Science, Chemistry, and Cells

1 The Scientific Study of Life 2



IM_photo/Shutterstock

1.1 What Is Life? 3

- A. Life Is Organized 5
- B. Life Requires Energy 5
- C. Life Maintains Internal Constancy 6
- D. Life Reproduces, Grows, and Develops 6
- E. Life Evolves 7

1.2 The Tree of Life Includes Three Main Branches 9

1.3 Scientists Study the Natural World 10

- A. The Scientific Method Has Multiple Interrelated Parts 10
- B. An Experimental Design Is a Careful Plan 12
- C. Theories Are Comprehensive Explanations 13
- D. Scientific Inquiry Has Limitations 14
- E. Biology Continues to Advance 16

BURNING QUESTION 1.1 *Are viruses alive?* 8

WHY WE CARE 1.1 *Appreciating Science* 10

WHY WE CARE 1.2 *Distinguishing Good and Bad Scientific Arguments* 15

BURNING QUESTION 1.2 *Why am I here?* 16

INVESTIGATING LIFE 1.1 *The Orchid and the Moth* 16

2 The Chemistry of Life 20



Joshua Resnick/Shutterstock

2.1 Atoms Make Up All Matter 21

- A. Elements Are Fundamental Types of Matter 21
- B. Atoms Are Particles of Elements 22
- C. Isotopes Have Different Numbers of Neutrons 23

2.2 Chemical Bonds Link Atoms 24

- A. Electrons Determine Bonding 25
- B. Positive and Negative Ions Attract in an Ionic Bond 25
- C. In a Covalent Bond, Atoms Share Electrons 26
- D. Partial Charges on Polar Molecules Make Hydrogen Bonds Possible 28

2.3 Water Is Essential to Life 29

- A. Water Is Cohesive and Adhesive 29
- B. Many Substances Dissolve in Water 29
- C. Water Regulates Temperature 30
- D. Water Expands as It Freezes 30
- E. Water Participates in Life's Chemical Reactions 31

2.4 Cells Have an Optimum pH 32

2.5 Cells Contain Four Major Types of Organic Molecules 33

- A. Large Organic Molecules Are Composed of Smaller Subunits 33
- B. Carbohydrates Include Simple Sugars and Polysaccharides 34
- C. Proteins Are Complex and Highly Versatile 36
- D. Nucleic Acids Store and Transmit Genetic Information 38
- E. Lipids Are Hydrophobic and Energy-Rich 40

WHY WE CARE 2.1 *Acids and Bases in Everyday Life* 34

BURNING QUESTION 2.1 *What does it mean when food is "organic" or "natural"?* 35

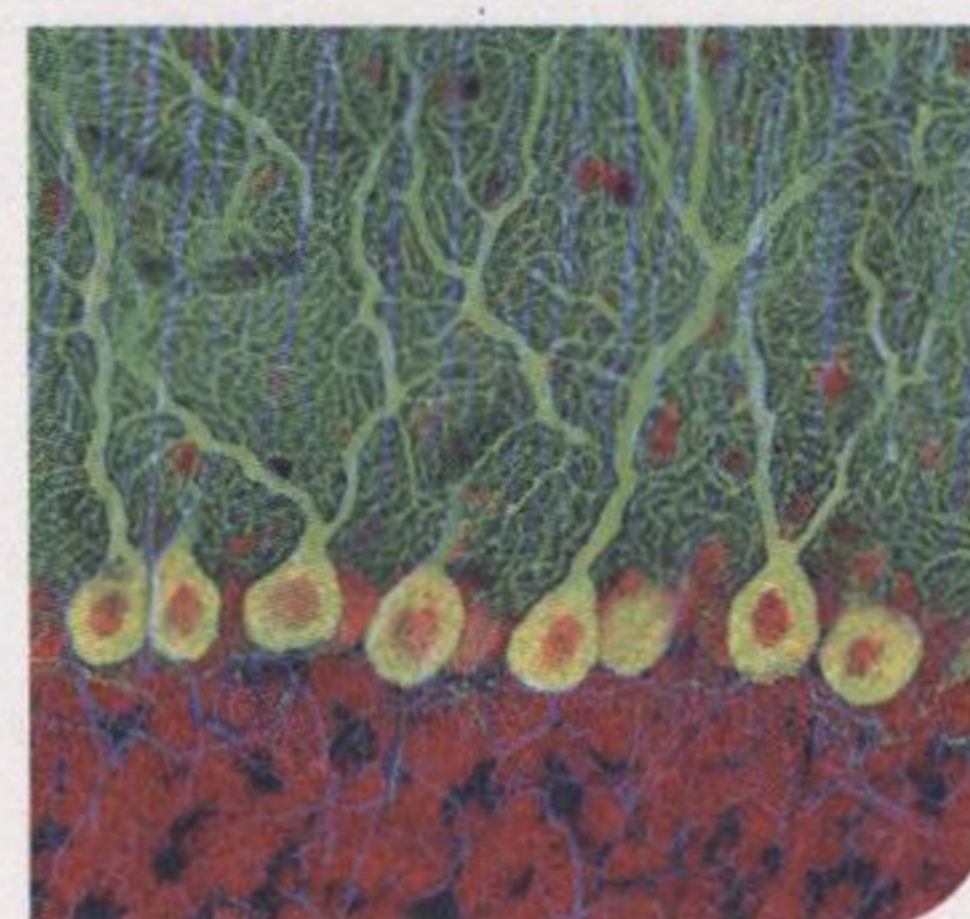
WHY WE CARE 2.2 *Counting Macros* 36

WHY WE CARE 2.3 *Sugar Substitutes and Fake Fats* 42

BURNING QUESTION 2.2 *What is junk food?* 43

INVESTIGATING LIFE 2.1 *Chemical Warfare on a Tiny Battlefield* 44

3 Cells 48



Thomas Deerinck/NCMIR/
Science Source

3.1 Cells Are the Units of Life 49

- A. Simple Lenses Revealed the First Glimpses of Cells 49
- B. Microscopes Magnify Cell Structures 49
- C. All Cells Have Features in Common 51

3.2 Different Cell Types Characterize Life's Three Domains 52

- A. Domains Bacteria and Archaea Contain Prokaryotic Organisms 52
- B. Domain Eukarya Contains Organisms with Complex Cells 53

3.3 A Membrane Separates Each Cell from Its Surroundings 54

3.4 Eukaryotic Organelles Divide Labor 56

- A. The Nucleus, Endoplasmic Reticulum, and Golgi Interact to Secrete Substances 57
- B. Lysosomes, Vacuoles, and Peroxisomes Are Cellular Digestion Centers 59
- C. Mitochondria Extract Energy from Nutrients 60
- D. Photosynthesis Occurs in Chloroplasts 60

3.5 The Cytoskeleton Supports Eukaryotic Cells 62

3.6 Cells Stick Together and Communicate with One Another 64

BURNING QUESTION 3.1 *Is it possible to build an artificial cell?* 55

WHY WE CARE 3.1 *Most of Your Cells Are Not Your Own* 57

INVESTIGATING LIFE 3.1 *Bacterial Magnets* 65

4 The Energy of Life 68



maxpro/Shutterstock

4.1 All Cells Capture and Use Energy 69

- A. Energy Allows Cells to Do Life's Work 69
- B. Life Requires Energy Transformations 70

4.2 Networks of Chemical Reactions Sustain Life 71

- A. Chemical Reactions Require Energy Input or Release Energy 71
- B. Linked Oxidation and Reduction Reactions Form Electron Transport Chains 71

4.3 ATP Is Cellular Energy Currency 72

- A. Energy in ATP Is Critical to the Life of a Cell 72
- B. ATP Represents Short-Term Energy Storage 73

4.4 Enzymes Speed Reactions 74

- A. Enzymes Bring Reactants Together 74
- B. Many Factors Affect Enzyme Activity 74

4.5 Membrane Transport May Release Energy or Cost Energy 75

- A. Passive Transport Does Not Require Energy Input 76
- B. Active Transport Requires Energy Input 78
- C. Endocytosis and Exocytosis Use Vesicles to Transport Substances 79

WHY WE CARE 4.1 *Enzymes Are Everywhere* 74

BURNING QUESTION 4.1 *Do hand sanitizers work?* 75

INVESTIGATING LIFE 4.1 *Does Natural Selection Maintain Cystic Fibrosis?* 80

5 Photosynthesis 84



Rodrigo A. Torres/
Glow Images

5.1 Life Depends on Photosynthesis 85

5.2 Photosynthetic Pigments Capture Sunlight 86

5.3 Chloroplasts Are the Sites of Photosynthesis 87

5.4 Photosynthesis Occurs in Two Stages 88

5.5 The Light Reactions Begin Photosynthesis 89

- A. Light Striking Photosystem II Provides the Energy to Produce ATP 91
- B. Electrons from Photosystem I Reduce NADP⁺ to NADPH 91

5.6 The Carbon Reactions Produce Carbohydrates 92

5.7 C₃, C₄, and CAM Plants Use Different Carbon Fixation Pathways 93

BURNING QUESTION 5.1 *Why do leaves change colors in the fall?* 89

BURNING QUESTION 5.2 *Does air have mass?* 91

WHY WE CARE 5.1 *Weed Killers* 94

INVESTIGATING LIFE 5.1 *Salamanders Snack on Sugars from Solar Cells* 95

6 Respiration and Fermentation 98



Three Images/Lifsize/Getty
Images

6.1 Cells Use Energy in Food to Make ATP 99

6.2 Cellular Respiration Includes Three Main Processes 100

6.3 In Eukaryotic Cells, Mitochondria Produce Most ATP 101

6.4 Glycolysis Breaks Down Glucose to Pyruvate 102

6.5 Aerobic Respiration Yields Much More ATP Than Glycolysis Alone 103

- A. Pyruvate Is Oxidized to Acetyl CoA 103
- B. The Krebs Cycle Produces ATP and High-Energy Electron Carriers 104
- C. The Electron Transport Chain Drives ATP Formation 105

6.6 How Many ATPs Can One Glucose Molecule Yield? 106

6.7 Other Food Molecules Enter the Energy-Extracting Pathways 107

6.8 Some Cells Thrive in Habitats That Lack O₂ 108

WHY WE CARE 6.1 *Some Poisons Inhibit Respiration* 103

BURNING QUESTION 6.1 *How do weight-loss drugs work?* 105

BURNING QUESTION 6.2 *What happens during hibernation?* 107

INVESTIGATING LIFE 6.1 *Hot Plants Offer Heat Reward* 109

UNIT 2 DNA, Inheritance, and Biotechnology

7 DNA Structure and Gene Function 112



Philippe Gouveia/iStock/
Getty Images

- 7.1 DNA Is a Double Helix 113**
- 7.2 DNA Stores Genetic Information: An Overview 115**
- 7.3 Transcription Uses a DNA Template to Build RNA 116**
- 7.4 Translation Builds the Protein 118**
 - A. Translation Requires mRNA, tRNA, and Ribosomes 118
 - B. Translation Occurs in Three Steps 119
 - C. Proteins Must Fold Correctly After Translation 120
- 7.5 Cells Regulate Gene Expression 121**
 - A. Operons Are Groups of Bacterial Genes That Share One Promoter 121
 - B. Eukaryotic Organisms Use Many Regulatory Methods 121
- 7.6 Mutations Change DNA 123**
 - A. Mutations Range from Silent to Devastating 123
 - B. What Causes Mutations? 124
 - C. Mutations Are Important for Many Reasons 125
- 7.7 Viruses Are Genes Wrapped in a Protein Coat 126**
 - A. Viruses Are Smaller and Simpler Than Cells 126
 - B. Viral Replication Occurs in Five Stages 127
- 7.8 Viruses Infect All Cell Types 128**
 - A. Bacteriophages May Kill Cells Immediately or “Hide” in a Cell 128
 - B. Animal Viruses May Cause Immediate Cell Death 129
 - C. Some Animal Viruses Linger for Years 129
 - D. Viruses Cause Diseases in Plants 131
- 7.9 Drugs and Vaccines Help Fight Viral Infections 131**
- 7.10 Viroids and Prions Are Other Noncellular Infectious Agents 132**

WHY WE CARE 7.1 Poisons That Block Protein Production 120

BURNING QUESTION 7.1 Do genes determine sexual orientation? 125

BURNING QUESTION 7.2 Why do we get sick when the weather turns cold? 128

INVESTIGATING LIFE 7.1 Clues to the Origin of Language 133

8 DNA Replication, Binary Fission, and Mitosis 138



Odilon Dimier/PhotoAlto/
Getty Images

- 8.1 Cells Divide and Cells Die 139**
 - A. Sexual Life Cycles Include Mitosis, Meiosis, and Fertilization 139
 - B. Cell Death Is Part of Life 140
- 8.2 DNA Replication Precedes Cell Division 141**
- 8.3 Bacteria and Archaea Divide by Binary Fission 142**
- 8.4 Replicated Chromosomes Condense as a Eukaryotic Cell Prepares to Divide 143**
- 8.5 Mitotic Division Generates Exact Cell Copies 145**
 - A. DNA Is Copied During Interphase 145
 - B. Chromosomes Divide During Mitosis 146
 - C. The Cytoplasm Splits in Cytokinesis 148
- 8.6 Cancer Cells Divide Uncontrollably 148**
 - A. Chemical Signals Regulate Cell Division 148
 - B. Cancer Cells Are Malignant 149
 - C. Cancer Treatments Remove or Kill Abnormal Cells 149
 - D. Lifestyle, Family History, and Age All Affect Cancer Risk 150

BURNING QUESTION 8.1 Do all human cells divide at the same rate? 145

WHY WE CARE 8.1 Skin Cancer 150

INVESTIGATING LIFE 8.1 Evolutionary Strategies in the Race Against Cancer 150

9 Sexual Reproduction and Meiosis 154



shene/Moment Open/Getty
Images

- 9.1 Why Sex? 155**
- 9.2 Diploid Cells Contain Two Homologous Sets of Chromosomes 156**
- 9.3 Meiosis Is Essential in Sexual Reproduction 157**
- 9.4 In Meiosis, DNA Replicates Once, but the Nucleus Divides Twice 158**
- 9.5 Meiosis Generates Enormous Variability 160**
 - A. Crossing Over Shuffles Alleles 160
 - B. Homologous Pairs Are Oriented Randomly During Metaphase I 161
 - C. Random Fertilization Multiplies the Diversity 162

9.6 Mitosis and Meiosis Have Different Functions: A Summary 162

9.7 Errors Sometimes Occur in Meiosis 164

- A. Nondisjunction Results in Extra or Missing Chromosomes 164
- B. Polyploidy Means Extra Chromosome Sets 166

BURNING QUESTION 9.1 How are males and females defined in other species? 158

BURNING QUESTION 9.2 If mules are sterile, then how are they produced? 160

WHY WE CARE 9.1 Multiple Births 164

INVESTIGATING LIFE 9.1 Evolving Germs Select for Sex in Worms 167

10 Patterns of Inheritance 170



Rick Gomez/Getty Images

10.1 Chromosomes Are Packets of Genetic Information: A Review 171

10.2 Mendel's Experiments Uncovered Basic Laws of Inheritance 172

- A. Dominant Alleles Appear to Mask Recessive Alleles 173
- B. For Each Gene, a Cell's Two Alleles May Be Identical or Different 174

10.3 The Two Alleles of a Gene End Up in Different Gametes 175

- A. The Simplest Punnett Squares Track the Inheritance of One Gene 175
- B. Meiosis Explains Mendel's Law of Segregation 176

10.4 Genes on Different Chromosomes Are Inherited Independently 178

- A. Tracking Two-Gene Inheritance May Require Large Punnett Squares 178
- B. Meiosis Explains Mendel's Law of Independent Assortment 178
- C. The Product Rule Is a Useful Shortcut 178

10.5 Genes on the Same Chromosome May Be Inherited Together 180

- A. Genes on the Same Chromosome Are Linked 180
- B. Studies of Linked Genes Have Yielded Chromosome Maps 181

10.6 Inheritance Patterns Are Rarely Simple 182

- A. Incomplete Dominance and Codominance Add Phenotype Classes 182
- B. Relating Genotype to Phenotype May Be Difficult 182

10.7 Sex-Linked Genes Have Unique Inheritance Patterns 184

- A. X-Linked Recessive Conditions Affect More Males Than Females 184
- B. X Inactivation Prevents "Double Dosing" of Proteins 184

10.8 Pedigrees Show Modes of Inheritance 186

10.9 Most Traits Are Influenced by the Environment and Multiple Genes 188

- A. The Environment Can Alter the Phenotype 188
- B. Polygenic Traits Depend on More Than One Gene 189

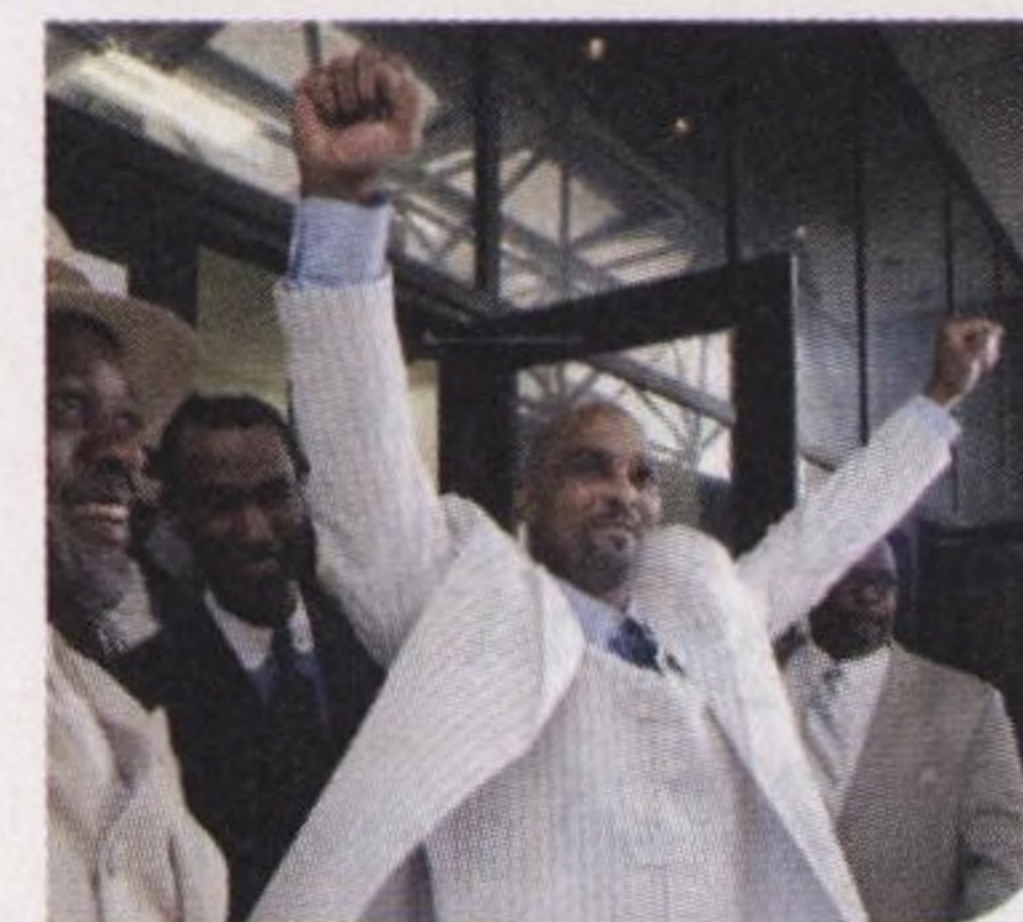
BURNING QUESTION 10.1 Why does diet soda have a warning label? 174

BURNING QUESTION 10.2 Is male baldness really from the female side of the family? 186

WHY WE CARE 10.1 The Origin of Obesity 188

INVESTIGATING LIFE 10.1 Heredity and the Hungry Hordes 190

11 DNA Technology 196



Tony Gutierrez/AP Images

11.1 DNA Technology Is Changing the World 197

11.2 DNA Technology's Tools Apply to Individual Genes or Entire Genomes 198

- A. Transgenic Organisms Contain DNA from Multiple Sources 198
- B. DNA Sequencing Reveals the Order of Bases 200
- C. PCR Replicates DNA in a Test Tube 202
- D. CRISPR Cuts and Edits Specific Genes 202

11.3 DNA Profiling Detects Genetic Differences 203

- A. Home DNA-Testing Kits Identify Differences in Single Nucleotides 204
- B. Short Tandem Repeats Are Useful in Criminal Justice 204
- C. Mitochondrial DNA Traces the Maternal Lineage 205

11.4 Stem Cells and Cloning Add New Ways to Copy Cells and Organisms 206

- A. Stem Cells Divide to Form Multiple Cell Types 206
- B. Cloning Produces Identical Copies of an Organism 207

11.5 Many Medical Tests and Procedures Use DNA Technology 209

- A. DNA Probes Detect Specific Sequences 209
- B. Preimplantation Genetic Diagnosis Can Screen Embryos for Some Diseases 209
- C. Genetic Testing Can Detect Existing Diseases 210
- D. Gene Therapy Uses DNA to Treat Disease 210
- E. Medical Uses of DNA Technology Raise Many Ethical Issues 211

BURNING QUESTION 11.1 Is selective breeding the same as genetic engineering? 198

WHY WE CARE 11.1 Gene Doping 211

INVESTIGATING LIFE 11.1 Weeds Get a Boost from Their Transgenic Cousins 212

UNIT 3 Evolution and Diversity

12 Forces of Evolutionary Change 216



Brent Durand/Moment/Getty Images

12.1 Evolution Acts on Populations 217

12.2 Evolutionary Thought Has Evolved for Centuries 218

- A. Many Explanations Have Been Proposed for Life's Diversity 218
- B. Charles Darwin's Voyage Provided a Wealth of Evidence 219
- C. *On the Origin of Species* Proposed Natural Selection as an Evolutionary Mechanism 220
- D. Evolutionary Theory Continues to Expand 222

12.3 Natural Selection Molds Evolution 223

- A. Adaptations Enhance Reproductive Success 223
- B. Natural Selection Eliminates Poorly Adapted Phenotypes 224
- C. Natural Selection Does Not Have a Goal 224
- D. What Does "Survival of the Fittest" Mean? 225

12.4 Evolution Is Inevitable in Real Populations 226

- A. At Hardy–Weinberg Equilibrium, Allele Frequencies Do Not Change 226
- B. In Reality, Allele Frequencies Always Change 227

12.5 Natural Selection Can Shape Populations in Three Main Ways 228

12.6 Sexual Selection Directly Influences Reproductive Success 230

12.7 Evolution Occurs in Several Additional Ways 231

- A. Mutation Fuels Evolution 231
- B. Genetic Drift Occurs by Chance 231
- C. Nonrandom Mating Concentrates Alleles Locally 233
- D. Migration Moves Alleles Between Populations 233

WHY WE CARE 12.1 A Brief History of Dogs 220

BURNING QUESTION 12.1 Is there such a thing as a "pinnacle of evolution"? 226

WHY WE CARE 12.2 The Unending War with Bacteria 229

INVESTIGATING LIFE 12.1 Bacterial Evolution Goes "Hog Wild" on the Farm 234

13 Evidence of Evolution 238



(fossil): Martin Shields/Alamy Stock Photo; (inset): National Geographic Image Collection/Alamy Stock Photo

13.1 Clues to Evolution Lie in the Earth, Body Structures, and Molecules 239

13.2 Fossils Record Evolution 241

- A. The Fossil Record Is Often Incomplete 241
- B. The Age of a Fossil Can Be Estimated in Two Ways 242

13.3 Biogeography Considers Species' Geographical Locations 243

- A. The Theory of Plate Tectonics Explains Earth's Shifting Continents 243
- B. Species Distributions Reveal Evolutionary Events 244

13.4 Anatomical Comparisons May Reveal Common Descent 245

- A. Homologous Structures Have a Shared Evolutionary Origin 245
- B. Vestigial Structures Have Lost Their Functions 245
- C. Convergent Evolution Produces Superficial Similarities 246

13.5 Embryonic Development Patterns Provide Evolutionary Clues 246

13.6 Molecules Reveal Relatedness 248

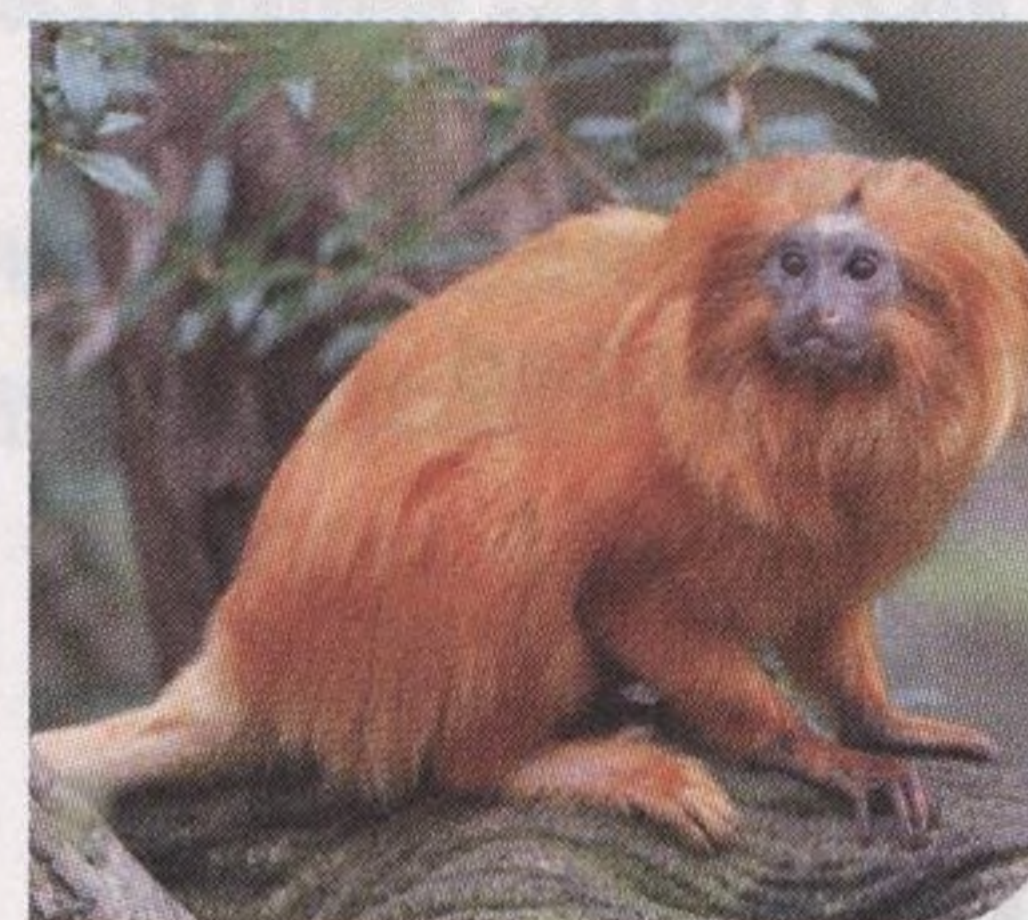
- A. Comparing DNA and Protein Sequences May Reveal Close Relationships 248
- B. Molecular Clocks Help Assign Dates to Evolutionary Events 249

BURNING QUESTION 13.1 Does the fossil record include transitional forms? 241

WHY WE CARE 13.1 An Evolutionary View of the Hiccups 248

INVESTIGATING LIFE 13.1 Evolutionary Leaps for a Desert Rodent 250

14 Speciation and Extinction 254



Raimund Linke/The Image Bank/Getty Images

14.1 What Is a Species? 255

- A. Linnaeus Classified Life Based on Appearance 255
- B. Species Can Be Defined Based on the Potential to Interbreed 255

14.2 Reproductive Barriers Cause Species to Diverge 256

- A. Prezygotic Barriers Prevent Fertilization 258
- B. Postzygotic Barriers Prevent Development of a Fertile Offspring 258

14.3 Spatial Patterns Define Two Types of Speciation 259

- A. Allopatric Speciation Reflects a Geographical Barrier 259
- B. Sympatric Speciation Occurs in a Shared Habitat 260
- C. Determining the Type of Speciation May Be Difficult 261

14.4 Speciation May Be Gradual or May Occur in Bursts 262

14.5 Extinction Marks the End of the Line 263

14.6 Biological Classification Systems Are Based on Common Descent 265

- A. The Taxonomic Hierarchy Organizes Species into Groups 265
- B. A Cladistics Approach Is Based on Shared Derived Traits 265

- C. Cladograms Depict Hypothesized Evolutionary Relationships 266
- D. Many Traditional Groups Are Not Clades 267

BURNING QUESTION 14.1 *Can people watch evolution and speciation in action?* 258

WHY WE CARE 14.1 *Recent Species Extinctions* 264

BURNING QUESTION 14.2 *Did rabbits come from frogs?* 267

INVESTIGATING LIFE 14.1 *Discovering the “Fishapod”* 268

15 Evolution and Diversity of Microbial Life 272



North County Times/Newscom

15.1 Life's Origin Remains Mysterious 273

- A. The First Organic Molecules May Have Formed in a Chemical “Soup” 274
- B. Clays May Have Helped Larger Molecules to Form 275
- C. Membranes Enclosed the Molecules 276
- D. Early Life Changed Earth Forever 276

15.2 Prokaryotes Are a Biological Success Story 277

- A. What Is a Prokaryote? 277
- B. Prokaryote Classification Traditionally Relies on Cell Structure and Metabolism 278
- C. Prokaryotes Include Two Domains with Enormous Diversity 280
- D. Bacteria and Archaea Are Essential to All Life 281

15.3 Eukaryotic Cells and Multicellularity Arose More Than a Billion Years Ago 284

- A. Endosymbiosis Explains the Origin of Mitochondria and Chloroplasts 284
- B. Multicellularity May Also Have Its Origin in Cooperation 286

15.4 Protists Are the Simplest Eukaryotes 287

- A. What Is a Protist? 287
- B. Algae Are Photosynthetic Protists 287
- C. Some Heterotrophic Protists Were Once Classified as Fungi 289
- D. Protozoa Are Diverse Heterotrophic Protists 290

15.5 Fungi Are Essential Decomposers 292

- A. What Is a Fungus? 292
- B. Fungal Classification Is Based on Reproductive Structures 293
- C. Fungi Interact with Other Organisms 294

BURNING QUESTION 15.1 *Does new life spring from simple molecules now, as it did in the past?* 276

WHY WE CARE 15.1 *Antibiotics and Other Germ Killers* 282

BURNING QUESTION 15.2 *Are there areas on Earth where no life exists?* 284

BURNING QUESTION 15.3 *Why and how do algae form?* 285

WHY WE CARE 15.2 *Preventing Mold* 296

INVESTIGATING LIFE 15.1 *Shining a Spotlight on Danger* 297

16 Evolution and Diversity of Plants 300



Tollkühn/ullstein bild/
Getty Images

16.1 Plants Have Changed the World 301

- A. Green Algae Are the Closest Relatives of Plants 301
- B. Plants Are Adapted to Life on Land 303

16.2 Bryophytes Are the Simplest Plants 306

16.3 Seedless Vascular Plants Have Xylem and Phloem but No Seeds 308

16.4 Gymnosperms Are “Naked Seed” Plants 310

16.5 Angiosperms Produce Seeds in Fruits 312

BURNING QUESTION 16.1 *Do all plants live on land?* 303

BURNING QUESTION 16.2 *What are biofuels?* 304

WHY WE CARE 16.1 *Gluten and Human Health* 313

INVESTIGATING LIFE 16.1 *Genetic Messages from Ancient Ecosystems* 314

17 Evolution and Diversity of Animals 318



Imagemore Co, Ltd./
Imagemore/Getty Images

17.1 Animals Live Nearly Everywhere 319

- A. What Is an Animal? 319
- B. Animal Life Began in the Water 319
- C. Animal Features Reflect Shared Ancestry 320
- D. Biologists Also Consider Other Characteristics 322

17.2 Sponges Are Simple Animals That Lack Differentiated Tissues 323

17.3 Cnidarians Are Radially Symmetrical, Aquatic Animals 324

17.4 Flatworms Have Bilateral Symmetry and Incomplete Digestive Tracts 325

17.5 Mollusks Are Soft, Unsegmented Animals 326

17.6 Annelids Are Segmented Worms 327

17.7 Nematodes Are Unsegmented, Cylindrical Worms 328

17.8 Arthropods Have Exoskeletons and Jointed Appendages 329

- A. Arthropods Have Complex Organ Systems 329
- B. Arthropods Are the Most Diverse Animals 330

17.9 Echinoderm Adults Have Five-Part, Radial Symmetry 334

17.10 Most Chordates Are Vertebrates 335

17.11 Chordate Diversity Extends from Water to Land to Sky 337

- A. Lancelets and Tunicates Are Invertebrate Chordates 337
- B. Hagfishes and Lampreys Have a Cranium but Lack Jaws 338
- C. Fishes Are Aquatic Vertebrates with Jaws, Gills, and Fins 338
- D. Amphibians Live on Land and in Water 340
- E. Reptiles Were the First Vertebrates to Thrive on Dry Land 340
- F. Mammals Are Warm, Furry Milk-Drinkers 342

17.12 Fossils and DNA Tell the Human Evolution Story 343

- A. Humans Are Primates 343
- B. Anatomical and Molecular Evidence Documents Primate Relationships 344
- C. Human Evolution Is Partially Recorded in Fossils 345
- D. Environmental Changes Have Spurred Human Evolution 347
- E. Migration and Culture Have Changed *Homo sapiens* 347

BURNING QUESTION 17.1 Are there really only nine kinds of animals? 331

WHY WE CARE 17.1 Your Tiny Companions 333

BURNING QUESTION 17.2 Did humans and dinosaurs ever coexist? 347

INVESTIGATING LIFE 17.1 Evolving Backwards 349

UNIT 4 Ecology

18 Populations 356



Lorado/E+/Getty Images

18.1 Ecology Is the Study of Interactions 357

18.2 A Population's Size and Density Change Over Time 358

18.3 Births and Deaths Help Determine Population Size 359

18.4 Natural Selection Influences Life Histories 361

- A. Organisms Balance Reproduction Against Other Requirements 361
- B. Opportunistic and Equilibrium Life Histories Reflect the Trade-Off Between Quantity and Quality 362

18.5 Population Growth May Be Exponential or Logistic 363

- A. Growth Is Exponential When Resources Are Unlimited 363
- B. Population Growth Eventually Slows 364
- C. Many Conditions Limit Population Size 364

18.6 The Human Population Continues to Grow 366

- A. Birth Rates and Death Rates Vary Worldwide 366
- B. The Ecological Footprint Is an Estimate of Resource Use 368

BURNING QUESTION 18.1 How do biologists count animals in the open ocean? 361

WHY WE CARE 18.1 Controlling Animal Pests 365

INVESTIGATING LIFE 18.1 A Toxic Compromise 369

19 Communities and Ecosystems 372



Siarhei Shuntsikau/iStock/Getty Images Plus

19.1 Organisms Interact Within Communities and Ecosystems 373

19.2 Earth Has Diverse Climates 374

19.3 Biomes Are Ecosystems with Distinctive Communities of Life 376

A. The Physical Environment Dictates Where Each Species Can Live 376

B. Terrestrial Biomes Range from the Lush Tropics to the Frozen Poles 377

C. Aquatic Biomes Include Fresh Water and the Oceans 381

19.4 Community Interactions Occur Within Each Biome 381

A. Many Species Compete for the Same Resources 382

B. Symbiotic Interactions Can Benefit or Harm a Species 383

C. Herbivory and Predation Link Species in Feeding Relationships 383

D. Closely Interacting Species May Coevolve 384

E. A Keystone Species Has a Pivotal Role in the Community 385

19.5 Succession Is a Gradual Change in a Community 386

19.6 Ecosystems Require Continuous Energy Input 388

A. Food Webs Depict the Transfer of Energy and Atoms 388

B. Heat Energy Leaves Each Food Web 390

C. Harmful Chemicals May Accumulate in the Highest Trophic Levels 391

19.7 Chemicals Cycle Within Ecosystems 392

A. Water Circulates Between the Land and the Atmosphere 393

B. Autotrophs Obtain Carbon as CO₂ 394

C. The Nitrogen Cycle Relies on Bacteria 395

D. The Phosphorus Cycle Begins with the Erosion of Rocks 397

E. Excess Nitrogen and Phosphorus Cause Problems in Water 397

BURNING QUESTION 19.1 How do animals survive in caves? 377

WHY WE CARE 19.1 What Happens After You Flush 388

WHY WE CARE 19.2 Mercury on the Wing 390

BURNING QUESTION 19.2 Is bottled water safer than tap water? 393

WHY WE CARE 19.3 The Nitrogen Cycle in Your Fish Tank 396

INVESTIGATING LIFE 19.1 Winged Migrants Sidestep Parasites 398

20 Preserving Biodiversity 402



crisod/iStock/Getty Images

20.1 Earth's Biodiversity Is Dwindling 403

20.2 Many Human Activities Destroy Habitats 404

20.3 Pollution Degrades Habitats 406

A. Water Pollution Threatens Aquatic Life 406

B. Air Pollution Causes Many Types of Damage 407

20.4 Global Climate Change Alters and Shifts Habitats 409

A. Greenhouse Gases Warm Earth's Surface 409

B. Global Climate Change Has Severe Consequences 411

20.5 Exotic Invaders and Overexploitation Devastate Many Species 412

A. Invasive Species Displace Native Organisms 412

B. Overexploitation Can Drive Species to Extinction 413

20.6 Some Biodiversity May Be Recoverable 414

A. Protecting and Restoring Habitat Saves Many Species at Once 414

B. Some Conservation Tools Target Individual Species 414

C. Conserving Biodiversity Involves Scientists and Ordinary Citizens 415

BURNING QUESTION 20.1 What are the best ways to reverse habitat destruction? 406

BURNING QUESTION 20.2 How can people reduce their contribution to water pollution? 408

BURNING QUESTION 20.3 How can small lifestyle changes reduce air pollution and global climate change? 411

BURNING QUESTION 20.4 How can people help slow the spread of invasive species? 412

BURNING QUESTION 20.5 Can everyday buying decisions help protect overharvested species? 413

WHY WE CARE 20.1 Environmental Legislation 415

INVESTIGATING LIFE 20.1 Up, Up, and Away 416

UNIT 5 Plant Anatomy and Physiology

21 Plant Form and Function 420



Naturfoto Honal/Corbis
Documentary/Getty Images

21.1 Vegetative Plant Parts Include Stems, Leaves, and Roots 421

21.2 Soil and Air Provide Water and Nutrients 422

A. Plants Require 16 Essential Elements 422

B. Leaves and Roots Absorb Essential Elements 423

21.3 Plant Cells Build Tissues 424

A. Plants Have Three Main Tissue Systems 424

B. Plants Have Several Cell Types 425

21.4 Tissues Build Stems, Leaves, and Roots 427

A. Stems Support Leaves 427

B. Leaves Are the Primary Organs of Photosynthesis 427

C. Roots Absorb Water and Minerals, and Anchor the Plant 429

21.5 Plants Have Flexible Growth Patterns, Thanks to Meristems 430

A. Plants Grow by Adding New Modules 430

B. Plant Growth Occurs at Meristems 431

C. In Primary Growth, Apical Meristems Lengthen Stems and Roots 431

D. In Secondary Growth, Lateral Meristems Thicken Stems and Roots 432

21.6 Vascular Tissue Transports Water, Minerals, and Sugar 434

A. Water and Minerals Are Pulled Up to Leaves in Xylem 434

B. Sugars Are Pushed to Nonphotosynthetic Cells in Phloem 436

C. Parasitic Plants Tap into Another Plant's Vascular Tissue 437

BURNING QUESTION 21.1 What's the difference between fruits and vegetables? 422

WHY WE CARE 21.1 Boost Plant Growth with Fertilizer 424

BURNING QUESTION 21.2 What are controlled burns? 433

BURNING QUESTION 21.3 Where does maple syrup come from? 437

INVESTIGATING LIFE 21.1 An Army of Tiny Watchdogs 438

22 Reproduction and Development of Flowering Plants 442



Gay Bumgarner/Alamy Stock
Photo

22.1 Angiosperms Reproduce Sexually and Asexually 443

22.2 The Angiosperm Life Cycle Includes Flowers, Fruits, and Seeds 444

A. Flowers Are Reproductive Organs 445

B. The Pollen Grain and Embryo Sac Are Gametophytes 445

C. Pollination Brings Pollen to the Stigma 446

D. Double Fertilization Yields Zygote and Endosperm 446

E. A Seed Is an Embryo and Its Food Supply Inside a Seed Coat 447

F. The Fruit Develops from the Ovary 448

G. Fruits Protect and Disperse Seeds 449

22.3 Plant Growth Begins with Seed Germination 450

22.4 Hormones Regulate Plant Growth and Development 451

- A. Auxins and Cytokinins Are Essential for Plant Growth 452
- B. Gibberellins, Ethylene, and Absciscic Acid Influence Plant Development in Many Ways 453

22.5 Light Is a Powerful Influence on Plant Life 454

22.6 Plants Respond to Gravity and Touch 455

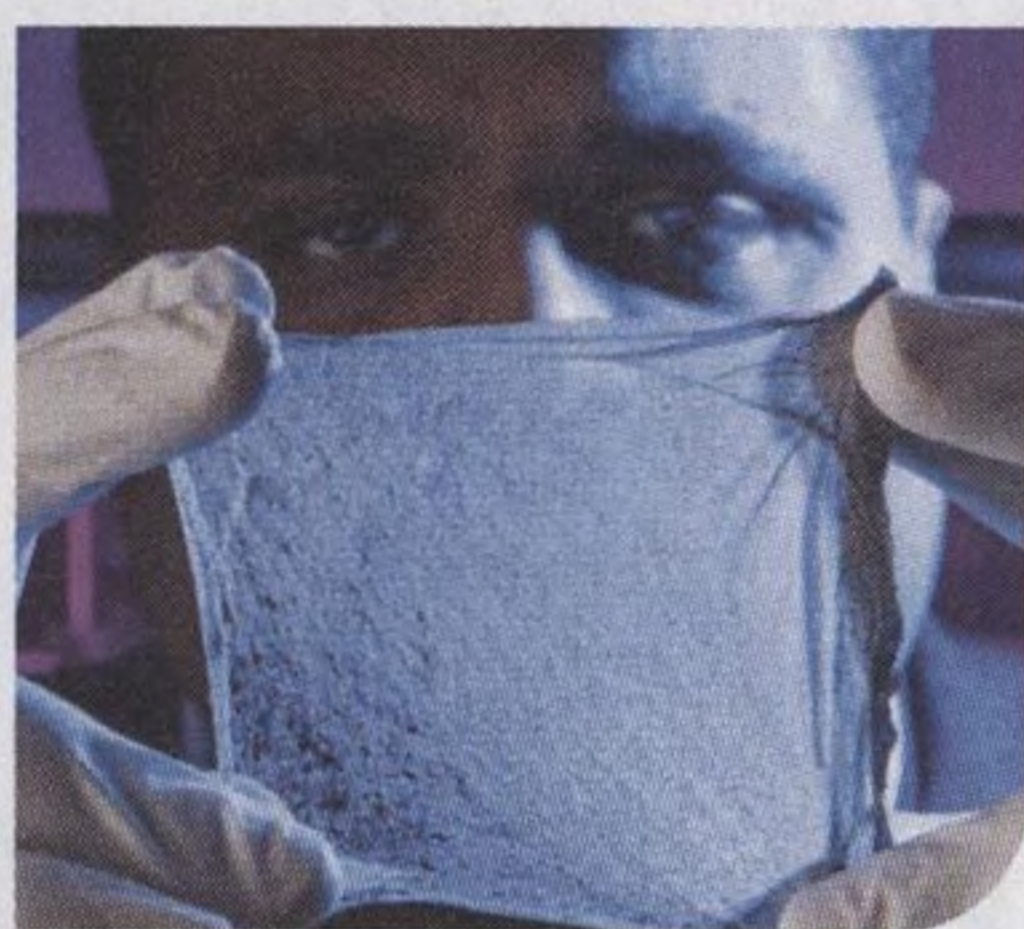
BURNING QUESTION 22.1 How can a fruit be seedless? 451

WHY WE CARE 22.1 Talking Plants 452

INVESTIGATING LIFE 22.1 A Red Hot Chili Pepper Paradox 456

UNIT 6 Animal Anatomy and Physiology

23 Animal Tissues and Organ Systems 460



James King-Holmes/Science Source

23.1 Specialized Cells Build Animal Bodies 461

23.2 Animals Consist of Four Tissue Types 462

- A. Epithelial Tissue Covers Surfaces 462
- B. Most Connective Tissues Bind Other Tissues Together 464
- C. Muscle Tissue Provides Movement 464
- D. Nervous Tissue Forms a Rapid Communication Network 465

23.3 Organ Systems Are Interconnected 466

- A. The Nervous and Endocrine Systems Coordinate Communication 466
- B. The Skeletal and Muscular Systems Support and Move the Body 466
- C. The Digestive, Circulatory, and Respiratory Systems Work Together to Acquire Energy 467
- D. The Urinary, Integumentary, Immune, and Lymphatic Systems Protect the Body 467
- E. The Reproductive System Produces the Next Generation 468

23.4 Organ System Interactions Promote Homeostasis 468

23.5 Animals Regulate Body Temperature 469

WHY WE CARE 23.1 Two Faces of Plastic Surgery 465

BURNING QUESTION 23.1 How does the body react to food poisoning? 466

BURNING QUESTION 23.2 Can biologists build artificial organs? 471

INVESTIGATING LIFE 23.1 New Clues in a Dinosaur-Sized Mystery 472

24 The Nervous System and the Senses 476



Amelie-Benoist/BSIP SA/Alamy Stock Photo

24.1 The Nervous System Forms a Rapid Communication Network 477

24.2 Neurons Are the Functional Units of a Nervous System 478

- A. A Typical Neuron Consists of a Cell Body, Dendrites, and an Axon 478

- B. Three Classes of Neurons Work Together 478

24.3 Action Potentials Convey Messages 479

- A. A Neuron at Rest Has a Negative Charge 480
- B. A Neuron's Membrane Potential Reverses During an Action Potential 480
- C. The Myelin Sheath Speeds Communication 482

24.4 Neurotransmitters Pass the Message from Cell to Cell 482

24.5 The Peripheral Nervous System Consists of Nerve Cells Outside the Central Nervous System 484

24.6 The Central Nervous System Consists of the Spinal Cord and Brain 486

- A. The Spinal Cord Transmits Information Between Body and Brain 486
- B. The Brain Is Divided into Several Regions 486
- C. Many Brain Regions Participate in Memory 488
- D. Damage to the Central Nervous System Can Be Devastating 489

24.7 The Senses Connect the Nervous System with the Outside World 490

- A. Sensory Receptors Respond to Stimuli by Generating Action Potentials 490
- B. Continuous Stimulation May Cause Sensory Adaptation 491

24.8 The General Senses Detect Touch, Temperature, and Pain 491

24.9 The Senses of Smell and Taste Detect Chemicals 492

24.10 Vision Depends on Light-Sensitive Cells 494

24.11 The Sense of Hearing Begins in the Ears 496

BURNING QUESTION 24.1 Do neurons communicate at the speed of light? 480

WHY WE CARE 24.1 Mind- and Mood-Altering Drugs 484

BURNING QUESTION 24.2 Do I really use only 10% of my brain? 486

BURNING QUESTION 24.3 Should you scratch that bug bite? 493

WHY WE CARE 24.2 Correcting Vision 495

BURNING QUESTION 24.4 What is an ear infection? 496

INVESTIGATING LIFE 24.1 Scorpion Stings Don't Faze Grasshopper Mice 498

25 The Endocrine System 502



fizkes/Shutterstock

25.1 The Endocrine System Uses Hormones to Communicate 503

25.2 Hormones Stimulate Responses in Target Cells 504

- A. Water-Soluble Hormones Trigger Second Messenger Systems 504
- B. Lipid-Soluble Hormones Directly Alter Gene Expression 505

25.3 The Hypothalamus and Pituitary Gland Oversee Endocrine Control 505

- A. The Posterior Pituitary Stores and Releases Two Hormones 507
- B. The Anterior Pituitary Produces and Secretes Six Hormones 507

25.4 Hormones from Many Glands Regulate Metabolism 508

- A. The Thyroid Gland Sets the Metabolic Pace 508
- B. The Parathyroid Glands Control Calcium Level 509
- C. The Adrenal Glands Coordinate the Body's Stress Responses 509
- D. The Pancreas Regulates Blood Glucose 510
- E. The Pineal Gland Secretes Melatonin 511

25.5 Hormones from the Ovaries and Testes Control Reproduction 512

BURNING QUESTION 25.1 What are endocrine disruptors? 508

WHY WE CARE 25.1 Puberty Blockers 512

INVESTIGATING LIFE 25.1 Addicted to Affection 513

26 The Skeletal and Muscular Systems 516



Jeff J Mitchell/Getty Images

26.1 Skeletons Take Many Forms 517

26.2 The Vertebrate Skeleton Features a Central Backbone 518

26.3 Bones Provide Support, Protect Internal Organs, and Supply Calcium 519

- A. Bones Consist Mostly of Bone Tissue and Cartilage 519
- B. Bone Meets Bone at a Joint 521
- C. Bones Are Constantly Built and Degraded 521
- D. Bones Help Regulate Calcium Homeostasis 522

26.4 Muscle Movement Requires Contractile Proteins and ATP 522

- A. Actin and Myosin Filaments Fill Muscle Cells 524
- B. Sliding Filaments Are the Basis of Muscle Cell Contraction 524
- C. Motor Neurons Stimulate Muscle Contraction 526

26.5 Muscle Cells Generate ATP in Multiple Ways 527

26.6 Exercise Reshapes Muscles 528

WHY WE CARE 26.1 Bony Evidence of Murder, Illness, and Evolution 519

BURNING QUESTION 26.1 Is creatine a useful dietary supplement? 527

BURNING QUESTION 26.2 Why does heat soothe sore muscles and joints? 529

INVESTIGATING LIFE 26.1 Did a Myosin Gene Mutation Make Humans Brainier? 530

27 The Circulatory and Respiratory Systems 534



Philippe Plailly/Science Source

27.1 Blood Plays a Central Role in Maintaining Homeostasis 535

- A. Plasma Carries Many Dissolved Substances 536
- B. Red Blood Cells Transport Oxygen 536
- C. White Blood Cells Fight Infection 536
- D. Blood Clotting Requires Platelets and Plasma Proteins 537

27.2 Animal Circulatory Systems Range from Simple to Complex 538

27.3 Blood Circulates Through the Heart and Blood Vessels 539

27.4 The Human Heart Is a Muscular Pump 540

- A. The Heart Has Four Chambers 540
- B. The Right and Left Halves of the Heart Deliver Blood Along Different Paths 540
- C. Cardiac Muscle Cells Produce the Heartbeat 541
- D. Exercise Strengthens the Heart 542

27.5 Blood Vessels Form the Circulation Pathway 542

- A. Arteries, Capillaries, and Veins Have Different Structures 543
- B. Blood Pressure and Velocity Differ Among Vessel Types 544

27.6 The Human Respiratory System Delivers Air to the Lungs 545

- A. The Nose, Pharynx, and Larynx Form the Upper Respiratory Tract 546
- B. The Lower Respiratory Tract Consists of the Trachea and Lungs 548

27.7 Breathing Requires Pressure Changes in the Lungs 550

27.8 Red Blood Cells Carry Most Oxygen and Carbon Dioxide 551

BURNING QUESTION 27.1 What is the difference between donating whole blood and donating plasma? 537

BURNING QUESTION 27.2 What causes bruises? 539

BURNING QUESTION 27.3 *If some exercise is good, is more exercise better?* 542

WHY WE CARE 27.1 *Unhealthy Circulatory and Respiratory Systems* 549

INVESTIGATING LIFE 27.1 *In (Extremely) Cold Blood* 552

28 The Digestive and Urinary Systems 556



Monkey Business Images/
Shutterstock

28.1 Animals Maintain Nutrient, Water, and Ion Balance 557

28.2 Digestive Systems Derive Energy and Raw Materials from Food 558

28.3 A Varied Diet Is Essential to Good Health 559

28.4 Body Weight Reflects Food Intake and Activity Level 560

- A. Body Mass Index Can Identify Weight Problems 560
- B. Starvation: Too Few Calories to Meet the Body's Needs 561
- C. Obesity: More Calories Than the Body Needs 561

28.5 Most Animals Have a Specialized Digestive Tract 562

- A. Acquiring Nutrients Requires Several Steps 562
- B. Digestive Tracts May Be Incomplete or Complete 563
- C. Diet Influences Digestive Tract Structure 564

28.6 The Human Digestive System Consists of Several Organs 565

- A. Muscles Underlie the Digestive Tract 566
- B. Digestion Begins in the Mouth 566
- C. The Stomach Stores, Digests, and Churns Food 566
- D. The Small Intestine Digests and Absorbs Nutrients 567
- E. The Large Intestine Completes Nutrient and Water Absorption 569

28.7 Animals Eliminate Nitrogenous Wastes and Regulate Water and Ions 570

28.8 The Urinary System Produces, Stores, and Eliminates Urine 572

28.9 Nephrons Remove Wastes and Adjust the Composition of Blood 573

- A. Nephrons Interact Closely with Blood Vessels 573
- B. Urine Formation Includes Filtration, Reabsorption, and Secretion 574
- C. Hormones Regulate Kidney Function 574

BURNING QUESTION 28.1 *Is a vegan diet healthy?* 561

BURNING QUESTION 28.2 *What is lactose intolerance?* 568

WHY WE CARE 28.1 *The Unhealthy Digestive System* 570

WHY WE CARE 28.2 *Urinary Incontinence* 572

BURNING QUESTION 28.3 *What can urine reveal about health and diet?* 573

WHY WE CARE 28.3 *Kidney Failure, Dialysis, and Transplants* 575

INVESTIGATING LIFE 28.1 *The Cost of a Sweet Tooth* 576

29 The Immune System 580



James Gathany/CDC

29.1 Many Cells, Tissues, and Organs Defend the Body 581

- A. White Blood Cells Play Major Roles in the Immune System 581
- B. The Lymphatic System Produces and Transports Many Immune System Cells 582
- C. The Immune System Has Two Main Subdivisions 582

29.2 Innate Defenses Are Nonspecific and Act Early 583

- A. External Barriers Form the First Line of Defense 583
- B. Internal Innate Defenses Destroy Invaders 584

29.3 Adaptive Immunity Defends Against Specific Pathogens 586

- A. Helper T Cells Play a Central Role in Adaptive Immunity 586
- B. Cytotoxic T Cells Provide Cell-Mediated Immunity 587
- C. B Cells Direct the Humoral Immune Response 588
- D. The Secondary Immune Response Is Stronger Than the Primary Response 590

29.4 Vaccines Jump-Start Immunity 590

29.5 Several Disorders Affect the Immune System 592

- A. Autoimmune Disorders Are Devastating and Mysterious 592
- B. Immunodeficiencies Lead to Opportunistic Infections 592
- C. Allergies Misdirect the Immune Response 593

WHY WE CARE 29.1 *Severe Burns* 584

WHY WE CARE 29.2 *Protecting a Fetus from Immune Attack* 587

BURNING QUESTION 29.1 *Why do we need multiple doses of some vaccines?* 591

BURNING QUESTION 29.2 *Can people be allergic to meat?* 592

INVESTIGATING LIFE 29.1 *Can a House Be Too Clean?* 594

30 Animal Reproduction and Development 598



Wild Horizons/Universal
Images Group/Getty Images

30.1 Animal Development Begins with Reproduction 599

- A. Reproduction Is Asexual or Sexual 599
- B. Development Is Indirect or Direct 600

30.2 Males Produce Sperm Cells 601

- A. Male Reproductive Organs Are Inside and Outside the Body 601
- B. Spermatogenesis Yields Sperm Cells 602
- C. Hormones Influence Male Reproductive Function 603

30.3 Females Produce Egg Cells 604

- A. Female Reproductive Organs Are Inside the Body 604
- B. Oogenesis Yields Egg Cells 605
- C. Hormones Influence Female Reproductive Function 606
- D. Hormonal Fluctuations Can Cause Discomfort 607

30.4 Reproductive Health Considers Contraception and Disease 608

30.5 The Human Infant Begins Life as a Zygote 611

- A. Fertilization Initiates Pregnancy 611
- B. The Preembryonic Stage Ends When Implantation Is Complete 612
- C. Organs Take Shape During the Embryonic Stage 614
- D. Organ Systems Become Functional in the Fetal Stage 615
- E. Muscle Contractions in the Uterus Drive Childbirth 616

WHY WE CARE 30.1 Sex vs. Gender 601

BURNING QUESTION 30.1 When can conception occur? 608

WHY WE CARE 30.2 The Rise of STIs 610

WHY WE CARE 30.3 Substances That Cause Congenital Disorders 613

INVESTIGATING LIFE 30.1 Playing "Dress Up" on the Reef 617

Appendix A Brief Guide to Statistical Significance A-1

Appendix B Units of Measurement A-4

Appendix C Periodic Table of the Elements A-5

Appendix D Amino Acid Structures A-6

Appendix E Learn How to Learn A-7

Glossary G-1

Index I-1